

## COMPREHENSIVE SERVICES

We offer competitive repair and calibration services, as well as easily accessible documentation and free downloadable resources.

## SELL YOUR SURPLUS

We buy new, used, decommissioned, and surplus parts from every NI series. We work out the best solution to suit your individual needs.

 Sell For Cash    Get Credit    Receive a Trade-In Deal

## OBSOLETE NI HARDWARE IN STOCK & READY TO SHIP

We stock **New**, **New Surplus**, **Refurbished**, and **Reconditioned** NI Hardware.



*Bridging the gap between the manufacturer and your legacy test system.*

 1-800-915-6216

 [www.apexwaves.com](http://www.apexwaves.com)

 [sales@apexwaves.com](mailto:sales@apexwaves.com)

All trademarks, brands, and brand names are the property of their respective owners.

**Request a Quote**

 **CLICK HERE**

**GPIB-RS232**



# ComponentWorks<sup>TM</sup>

---

## Getting Started with ComponentWorks

## **Worldwide Technical Support and Product Information**

[www.ni.com](http://www.ni.com)

## **National Instruments Corporate Headquarters**

11500 North Mopac Expressway Austin, Texas 78759-3504 USA Tel: 512 794 0100

## **Worldwide Offices**

Australia 03 9879 5166, Austria 0662 45 79 90 0, Belgium 02 757 00 20, Brazil 011 284 5011,  
Canada (Calgary) 403 274 9391, Canada (Ontario) 905 785 0085, Canada (Québec) 514 694 8521,  
China 0755 3904939, Denmark 45 76 26 00, Finland 09 725 725 11, France 01 48 14 24 24,  
Germany 089 741 31 30, Greece 30 1 42 96 427, Hong Kong 2645 3186, India 91805275406,  
Israel 03 6120092, Italy 02 413091, Japan 03 5472 2970, Korea 02 596 7456, Mexico (D.F.) 5 280 7625,  
Mexico (Monterrey) 8 357 7695, Netherlands 0348 433466, Norway 32 27 73 00, Poland 48 22 528 94 06,  
Portugal 351 1 726 9011, Singapore 2265886, Spain 91 640 0085, Sweden 08 587 895 00,  
Switzerland 056 200 51 51, Taiwan 02 2377 1200, United Kingdom 01635 523545

For further support information, see the [Technical Support Resources](#) appendix. To comment on the documentation, send e-mail to [techpubs@ni.com](mailto:techpubs@ni.com)

© Copyright 1996, 2000 National Instruments Corporation. All rights reserved.

# Important Information

---

## Warranty

The media on which you receive National Instruments software are warranted not to fail to execute programming instructions, due to defects in materials and workmanship, for a period of 90 days from date of shipment, as evidenced by receipts or other documentation. National Instruments will, at its option, repair or replace software media that do not execute programming instructions if National Instruments receives notice of such defects during the warranty period. National Instruments does not warrant that the operation of the software shall be uninterrupted or error free.

A Return Material Authorization (RMA) number must be obtained from the factory and clearly marked on the outside of the package before any equipment will be accepted for warranty work. National Instruments will pay the shipping costs of returning to the owner parts which are covered by warranty.

National Instruments believes that the information in this document is accurate. The document has been carefully reviewed for technical accuracy. In the event that technical or typographical errors exist, National Instruments reserves the right to make changes to subsequent editions of this document without prior notice to holders of this edition. The reader should consult National Instruments if errors are suspected. In no event shall National Instruments be liable for any damages arising out of or related to this document or the information contained in it.

EXCEPT AS SPECIFIED HEREIN, NATIONAL INSTRUMENTS MAKES NO WARRANTIES, EXPRESS OR IMPLIED, AND SPECIFICALLY DISCLAIMS ANY WARRANTY OF MERCHANTABILITY OR FITNESS FOR A PARTICULAR PURPOSE. CUSTOMER'S RIGHT TO RECOVER DAMAGES CAUSED BY FAULT OR NEGLIGENCE ON THE PART OF NATIONAL INSTRUMENTS SHALL BE LIMITED TO THE AMOUNT THEREFORE PAID BY THE CUSTOMER. NATIONAL INSTRUMENTS WILL NOT BE LIABLE FOR DAMAGES RESULTING FROM LOSS OF DATA, PROFITS, USE OF PRODUCTS, OR INCIDENTAL OR CONSEQUENTIAL DAMAGES, EVEN IF ADVISED OF THE POSSIBILITY THEREOF. This limitation of the liability of National Instruments will apply regardless of the form of action, whether in contract or tort, including negligence. Any action against National Instruments must be brought within one year after the cause of action accrues. National Instruments shall not be liable for any delay in performance due to causes beyond its reasonable control. The warranty provided herein does not cover damages, defects, malfunctions, or service failures caused by owner's failure to follow the National Instruments installation, operation, or maintenance instructions; owner's modification of the product; owner's abuse, misuse, or negligent acts; and power failure or surges, fire, flood, accident, actions of third parties, or other events outside reasonable control.

## Copyright

Under the copyright laws, this publication may not be reproduced or transmitted in any form, electronic or mechanical, including photocopying, recording, storing in an information retrieval system, or translating, in whole or in part, without the prior written consent of National Instruments Corporation.

## Trademarks

ComponentWorks™, CVI™, DataSocket™, HiQ™, IMAQ™, Measurement Studio™, National Instruments™, ni.com™, and NI-DAQ™ are trademarks of National Instruments Corporation.

Product and company names mentioned herein are trademarks or trade names of their respective companies.

## WARNING REGARDING USE OF NATIONAL INSTRUMENTS PRODUCTS

(1) NATIONAL INSTRUMENTS PRODUCTS ARE NOT DESIGNED WITH COMPONENTS AND TESTING FOR A LEVEL OF RELIABILITY SUITABLE FOR USE IN OR IN CONNECTION WITH SURGICAL IMPLANTS OR AS CRITICAL COMPONENTS IN ANY LIFE SUPPORT SYSTEMS WHOSE FAILURE TO PERFORM CAN REASONABLY BE EXPECTED TO CAUSE SIGNIFICANT INJURY TO A HUMAN.

(2) IN ANY APPLICATION, INCLUDING THE ABOVE, RELIABILITY OF OPERATION OF THE SOFTWARE PRODUCTS CAN BE IMPAIRED BY ADVERSE FACTORS, INCLUDING BUT NOT LIMITED TO FLUCTUATIONS IN ELECTRICAL POWER SUPPLY, COMPUTER HARDWARE MALFUNCTIONS, COMPUTER OPERATING SYSTEM SOFTWARE FITNESS, FITNESS OF COMPILERS AND DEVELOPMENT SOFTWARE USED TO DEVELOP AN APPLICATION, INSTALLATION ERRORS, SOFTWARE AND HARDWARE COMPATIBILITY PROBLEMS, MALFUNCTIONS OR FAILURES OF ELECTRONIC MONITORING OR CONTROL DEVICES, TRANSIENT FAILURES OF ELECTRONIC SYSTEMS (HARDWARE AND/OR SOFTWARE), UNANTICIPATED USES OR MISUSES, OR ERRORS ON THE PART OF THE USER OR APPLICATIONS DESIGNER (ADVERSE FACTORS SUCH AS THESE ARE HEREAFTER COLLECTIVELY TERMED "SYSTEM FAILURES"). ANY APPLICATION WHERE A SYSTEM FAILURE WOULD CREATE A RISK OF HARM TO PROPERTY OR PERSONS (INCLUDING THE RISK OF BODILY INJURY AND DEATH) SHOULD NOT BE RELIANT SOLELY UPON ONE FORM OF ELECTRONIC SYSTEM DUE TO THE RISK OF SYSTEM FAILURE. TO AVOID DAMAGE, INJURY, OR DEATH, THE USER OR APPLICATION DESIGNER MUST TAKE REASONABLY PRUDENT STEPS TO PROTECT AGAINST SYSTEM FAILURES, INCLUDING BUT NOT LIMITED TO BACK-UP OR SHUT DOWN MECHANISMS. BECAUSE EACH END-USER SYSTEM IS CUSTOMIZED AND DIFFERS FROM NATIONAL INSTRUMENTS' TESTING PLATFORMS AND BECAUSE A USER OR APPLICATION DESIGNER MAY USE NATIONAL INSTRUMENTS PRODUCTS IN COMBINATION WITH OTHER PRODUCTS IN A MANNER NOT EVALUATED OR CONTEMPLATED BY NATIONAL INSTRUMENTS, THE USER OR APPLICATION DESIGNER IS ULTIMATELY RESPONSIBLE FOR VERIFYING AND VALIDATING THE SUITABILITY OF NATIONAL INSTRUMENTS PRODUCTS WHENEVER NATIONAL INSTRUMENTS PRODUCTS ARE INCORPORATED IN A SYSTEM OR APPLICATION, INCLUDING, WITHOUT LIMITATION, THE APPROPRIATE DESIGN, PROCESS AND SAFETY LEVEL OF SUCH SYSTEM OR APPLICATION.

# Contents

---

## About This Manual

Using ComponentWorks Documentation to Get Started .....	vii
Getting Help.....	ix
Conventions .....	x

## Chapter 1

### Introduction to Measurement Studio and ComponentWorks

Measurement Studio Overview .....	1-1
ComponentWorks Overview .....	1-1
System Requirements .....	1-3
Installation Instructions.....	1-4

## Chapter 2

### Getting Started with ActiveX Controls

What Is an ActiveX Control?.....	2-1
What Are Properties and How Do I Get and Set Them? .....	2-4
Control Properties.....	2-4
Environment Properties .....	2-4
Configuring Controls in Property Pages.....	2-5
Changing Properties Programmatically.....	2-6
What Are Methods and How Do I Call Them? .....	2-8
Calling Methods .....	2-8
Working with Collections.....	2-9
Managing Collections .....	2-9
Accessing Objects with the Item Method .....	2-9
What Are Events and How Do I Define Them? .....	2-10
How Do I Benefit from Using ActiveX Controls? .....	2-12

## Chapter 3

### Getting Started with ComponentWorks in Visual Basic

Creating a ComponentWorks Project Template .....	3-1
Visualizing Data on a User Interface.....	3-4
Analyzing Data .....	3-7
Interacting with the Data.....	3-8
Acquiring Analog Data .....	3-9
Continuously Acquiring and Charting Data .....	3-12

Error Handling .....	3-13
Visual Basic On Error Statement .....	3-13
Return Values.....	3-15
Error and Warning Events.....	3-16
Testing and Debugging.....	3-16
Printing Variables during Program Execution .....	3-16
Monitoring Variables during Program Execution.....	3-17
Examining and Debugging during Program Execution .....	3-17
Executing the Program One Line at a Time.....	3-17
Stopping Program Execution at Breakpoints .....	3-17
Preparing Your Program for Distribution.....	3-18
Positioning the Form on the Screen .....	3-18
Customizing the Title Bar .....	3-18
Making an Executable.....	3-19
Building a Distributable Package.....	3-19
Implementing a Full-Featured Application .....	3-20

## Appendix A

### Technical Support Resources

### Glossary

### Index

### Figures

Figure 2-1.	Each Object Contributes to the Functionality of the Entire Control.....	2-2
Figure 2-2.	Software Objects Access Other Objects through Properties and Methods.....	2-3
Figure 2-3.	Set Control Properties in the ComponentWorks Property Pages.....	2-5
Figure 2-4.	Set Environment Properties in the Visual Basic Property Window .....	2-6
Figure 2-5.	Selecting Events in the Code Editor .....	2-12
Figure 3-1.	Loading the ComponentWorks Controls into the Toolbox.....	3-3
Figure 3-2.	Creating a Simple User Interface .....	3-4
Figure 3-3.	Analyzing Data .....	3-7
Figure 3-4.	Interacting with Data.....	3-8
Figure 3-5.	Configuring Analog Input Channels .....	3-10
Figure 3-6.	Continuously Acquiring and Charting Data .....	3-13

# About This Manual

---

This manual contains basic information to get you started developing programs with ComponentWorks ActiveX controls so that you can acquire, analyze, and present data within any ActiveX control container, including Visual Basic.

## Using ComponentWorks Documentation to Get Started

---

This manual is designed to teach you the fundamentals of developing Visual Basic programs with ComponentWorks ActiveX controls through interactive discussions and examples. If you are new to Visual Basic or ComponentWorks ActiveX controls, read this manual at your computer so you can test the discussion and concepts.

If you are working in an ActiveX control container other than Visual Basic, spend some time programming in your development environment. Check the documentation that accompanies your programming environment for getting started information or tutorials, especially tutorials that describe using ActiveX controls in the environment. If you have specific questions, search the online documentation of your development environment.

Before you begin, refer to Chapter 1, *Introduction to Measurement Studio and ComponentWorks*, for installation information and a ComponentWorks overview, and then use the following questions and answers to assess what you should do next.

### **Are you new to using ActiveX controls?**

Read Chapter 2, *Getting Started with ActiveX Controls*, for introductory information about ActiveX controls and why they are so useful. Then move on to Chapter 3, *Getting Started with ComponentWorks in Visual Basic*, to complete a ComponentWorks tutorial in Visual Basic.

### **Are you familiar with ActiveX controls but need to learn ComponentWorks controls and features?**

If you are already familiar with using ActiveX controls, including collection objects and the `Item` method, refer to the ComponentWorks online reference (**Start»Programs»National Instruments»Measurement Studio»Online Help»ComponentWorks Reference for Visual Basic**).

### **Do you want to develop applications quickly or modify existing examples?**

If you are familiar with using ActiveX controls, including collections and the `Item` method, and have some experience using ComponentWorks or other National Instruments products, you can get started more quickly by looking at the examples installed in `MeasurementStudio\Vb\Samples`.

Most examples demonstrate how to perform operations with a particular control or group of controls. To become familiar with an individual group of controls, look at the example for that particular group. Then, you can combine different programming concepts from the different groups in your application.

The examples include comments to provide more information about the steps performed in the example. The examples avoid performing complex programming tasks specific to one programming environment; instead, they focus on showing you how to perform operations using the ComponentWorks controls. When developing applications with ActiveX controls, you do a considerable amount of programming by setting properties in the property pages. Check the value of the control properties in the examples because the values greatly affect the operation of the example program. In some cases, the actual source code used by an example might not greatly differ from other examples; however, the values of the properties change the example significantly.



**Tip** ComponentWorks installs only Visual Basic examples. Visit the ComponentWorks Web site at [www.ni.com/cworks](http://www.ni.com/cworks) for Visual C++ and Borland Delphi examples.

### **Do you want more information about solving industry-specific problems?**

Refer to National Instruments online at [www.ni.com](http://www.ni.com) for information about building measurement and automation programs with any National Instruments product. The ComponentWorks online reference includes several ComponentWorks application notes to help you solve industry problems. Check the Application Note library for more technical notes and tutorials written to help you solve specific measurement and automation problems with National Instruments products.



# Getting Help

---

As you work with ComponentWorks, you might need to consult other resources if you have questions. The following sources can provide you with additional information about ComponentWorks:





**Tip** Refer to the documentation that you received with your development environment for information about working in the environment, learning the tools, and writing code.

- **ComponentWorks Reference**—Complete reference information for all ComponentWorks controls. You can access this help from the Windows **Start** menu (**Programs»National Instruments»Measurement Studio»Online Help»ComponentWorks Reference for Visual Basic**).
- **ComponentWorks Examples**—The ComponentWorks installer copies Visual Basic examples to `MeasurementStudio\Vb\Samples`. Use these examples to get started developing your own programs. Visit the ComponentWorks Web site to download examples for Visual C++ and Borland Delphi.
- **ComponentWorks Web Support** at [www.ni.com/cworks](http://www.ni.com/cworks)—ComponentWorks news and evaluation software, examples, technical product tutorials, customer solutions, and Internet-based virtual instruments.
- **National Instruments Web Support** at [www.ni.com](http://www.ni.com)—Examples, FAQs, a searchable KnowledgeBase, and the Application Notes library.

# Conventions

---

The following conventions appear in this manual:

»	The » symbol leads you through nested menu items and dialog box options to a final action. The sequence <b>Tools»Options»Environment</b> directs you to pull down the Visual Basic <b>Tools</b> menu, select the <b>Options</b> item, and change environment properties on the <b>Environment</b> dialog box.
	This icon denotes a tip, which alerts you to advisory information.
	This icon denotes a note, which alerts you to important information.
<b>bold</b>	Bold text denotes items that you must select or click on in the software, such as menu items and dialog box options.
<i>italic</i>	Italic text denotes variables, emphasis, a cross reference, or an introduction to a key concept. This font also denotes text that is a placeholder for a word or value that you must supply.
monospace	Text in this font denotes text or characters that you should enter from the keyboard, sections of code, programming examples, and syntax examples. This font is also used for the proper names of paths, directories, programs, procedures, functions, operations, variables, filenames and extensions, and code excerpts.
<b>monospace bold</b>	Bold text in this font emphasizes lines of code that are different from the other examples or indicates that you must add code to the example.

---

# Introduction to Measurement Studio and ComponentWorks

This chapter introduces Measurement Studio and ComponentWorks and lists system requirements and installation instructions.

## Measurement Studio Overview

---

Measurement Studio bundles LabWindows/CVI for ANSI C programmers, ComponentWorks for Microsoft Visual Basic programmers, and ComponentWorks++ for Microsoft Visual C++ programmers to deliver measurement and automation components in the programming environment of your choice.

The Measurement Studio Base package includes the instrument control, user interface, base analysis, and Internet tools you need for building common measurement and automation programs. The Measurement Studio Full Development System adds to the Base package digital signal processing (DSP) and advanced analysis components. ComponentWorks includes IVI controls in the Full Development System.

## ComponentWorks Overview

---

ComponentWorks is a collection of ActiveX controls for acquiring, analyzing, manipulating, and presenting data within any ActiveX control container. The ComponentWorks ActiveX controls are designed for use in Visual Basic, and some ComponentWorks features and utilities have been incorporated with the Visual Basic user in mind. However, you can use ActiveX controls in any application that supports them, including Microsoft Internet Explorer, Microsoft Visual C++, and Borland Delphi.

You can use either of the Measurement Studio packages to easily develop complex custom user interfaces to display your data; acquire data with your National Instruments Data Acquisition (DAQ) boards; control serial, GPIB, and VXI instruments and controllers; analyze the data you acquired from a device; or share live data between different applications over the Internet.

ComponentWorks offers smaller, more focused ComponentWorks packages as well. The ComponentWorks Starter Kit includes the essential user interface and instrument tools you need to build a measurement application in any ActiveX control container. If you are developing machine vision or imaging applications, building automation interfaces, or controlling processes with PID algorithms, ComponentWorks offers the ComponentWorks IMAQ Vision, Automation Symbols, and Autotuning PID packages.

The following list describes the functionality that ComponentWorks ActiveX controls can add to your custom programs:

- User Interface Controls (Starter Kit, Measurement Studio Base and Full)—Present your data in a technical format. These controls include a graph/strip chart, slides, thermometers, tanks, knobs, gauges, meters, LEDs, and switches.
- Three-Dimensional Graph Control (Measurement Studio Base and Full)—Visualize three-dimensional data on a user interface.
- DAQ Controls (Starter Kit, Measurement Studio Base and Full)—Perform analog I/O, digital I/O, and counter/timer I/O operations using National Instruments DAQ products.
- GPIB, Serial, and VISA Controls (Starter Kit, Measurement Studio Base and Full)—Control and retrieve data from instruments or devices connected to a serial, GPIB, or VXI port in your computer. You must connect GPIB instruments with a National Instruments GPIB interface card.
- DataSocket Control and Tools (Measurement Studio Base and Full)—Share live data between applications or HTTP, FTP, OPC, and file servers.
- IVI Controls (Measurement Studio Full)—Control scopes and DMMs. With IVI, you can develop hardware-independent test systems, isolating your test programs from changes in the instrument hardware.
- Analysis Library Controls (Starter Kit, Measurement Studio Base and Full)—Functions for statistics, advanced signal processing, windowing, filters, curve fitting, vector and matrix algebra routines, probability, and array manipulations. Refer to the ComponentWorks

online reference to find out which analysis functions are available in your ComponentWorks package.

- IMAQ Vision Controls (ComponentWorks IMAQ Vision)—Acquire images from National Instruments image acquisition (IMAQ) boards, display them in your program, perform interactive viewer operations, and analyze your images to extract information with the ComponentWorks IMAQ Vision package.
- Industrial Automation Controls (ComponentWorks Automation Symbols)—Build advanced custom user interfaces for your industrial process monitor or control programs. The ComponentWorks Automation Symbols package includes controls for pipes, motors, pumps, valves, and vessels.
- PID Control (ComponentWorks Autotuning PID)—Control programs based on proportional-integral-derivative (PID) controllers. For example, you might use the ComponentWorks Autotuning PID package to control processes such as heating and cooling systems, fluid level monitoring, flow control, and pressure control.

## System Requirements

---

To use the ComponentWorks ActiveX controls, your computer must have the following:

- Microsoft Windows 2000/NT/9x operating system (Windows NT users need NT 4.0 to use the DAQ controls)
- ActiveX control container such as Microsoft Visual Basic (32-bit version)
- Appropriate hardware and driver software if you are going to use a ComponentWorks I/O control, including DAQ, Serial, GPIB, VISA, IVI, or IMAQ
- 33 MHz 80486 or higher microprocessor (66 MHz 80486 or higher microprocessor recommended)
- VGA resolution (or higher) video adapter
- Minimum of 16 MB of memory
- Minimum of 85 MB of free hard disk space for the Measurement Studio Full Development System
- Microsoft-compatible mouse

# Installation Instructions

---

You can install ComponentWorks from the Measurement Studio CD. The setup program installs different components depending on the package you purchased.



**Note** If you have an earlier version of ComponentWorks installed on your computer, uninstall that version before installing ComponentWorks 3.0 or later. To uninstall ComponentWorks, select **Start»Settings»Control Panel»Add/Remove Programs**. Select National Instruments ComponentWorks from the list of programs and press the **Add/Remove** button.

1. Install driver software and hardware if you need to acquire data or control instruments in your program. Driver software performs the low-level calls to your hardware. You must install and configure the corresponding driver software and hardware before you can use any of the ComponentWorks hardware I/O controls, including the DAQ, GPIB, Serial, VISA, IVI, and IMAQ controls.



**Tip** Some ComponentWorks controls require features provided only in the newest versions of the driver. You can download the most current driver from the National Instruments Web site at [www.ni.com](http://www.ni.com).

2. Install your hardware device. Refer to your hardware installation guide for installation information.
3. Configure your device with National Instruments Measurement & Automation Explorer. After configuring your hardware, Measurement & Automation Explorer contains information about the hardware that you might need to use ComponentWorks I/O controls. For example, use the device number from Measurement & Automation Explorer to specify a device with a ComponentWorks I/O control.
4. Insert the ComponentWorks CD in the CD drive of your computer. From the CD startup screen, click **Install ComponentWorks**. If the CD startup screen does not appear, use Windows Explorer to run the `SETUP.EXE` program from your CD.
5. Follow the instructions on the screen.

The ComponentWorks setup program installs the following groups of files on your computer when you install the ComponentWorks Starter Kit, Measurement Studio Base package, or Measurement Studio Full Development System:

- ActiveX controls (.ocx), help files (.hlp, .cnt), and associated files:  
    \Windows\System
- Example ComponentWorks programs for Visual Basic:  
    \MeasurementStudio\Vb\Samples\
- Application notes and this manual in PDF format, which you can view with Adobe Acrobat Reader 3.0 or later:  
    \MeasurementStudio\Vb\Documentation
- Miscellaneous files:  
    MeasurementStudio\Vb\

---

# Getting Started with ActiveX Controls

This chapter contains introductory information about ActiveX controls.

## What Is an ActiveX Control?

---

ActiveX controls are reusable software components that you use within any ActiveX control container to maximize software reuse, increase productivity, and improve quality in your programs.

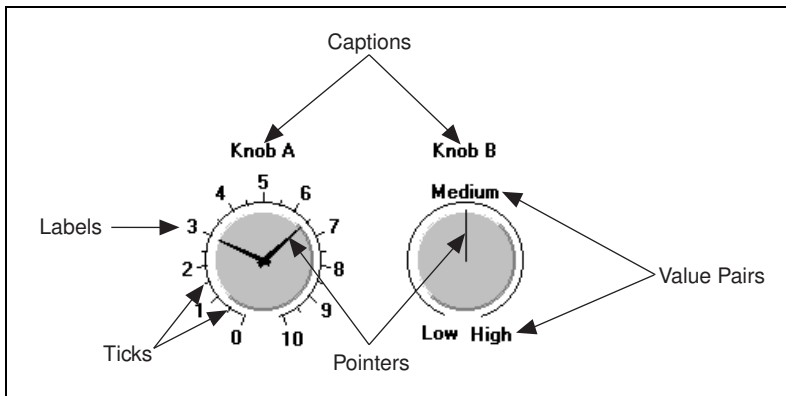
An ActiveX control encapsulates, or contains, three different parts—*properties*, *methods*, and *events*—that you will modify, call, and define to take advantage of the control's functionality in your program:

- Properties define attributes of a control, such as the way a control looks on the form or the initial state of the control when you run the program. Refer to the [What Are Properties and How Do I Get and Set Them?](#) section later in this chapter for information about using properties.
- Methods are functions that perform a specific action on or with an object. Refer to the [What Are Methods and How Do I Call Them?](#) section later in this chapter for information about calling methods.
- Events are notifications generated by an ActiveX control in response to some particular occurrence in the program, such as a mouse click on a user interface control or a completed acquisition. Refer to the [What Are Events and How Do I Define Them?](#) section later in this chapter for information about defining event procedures.

An ActiveX control is a group of components or *software objects*, where each object encapsulates and exposes one specific functionality and all of the objects work together to provide the entire functionality of the control. The main object of an ActiveX control contains some properties that store property values and some properties that access other objects in the control.



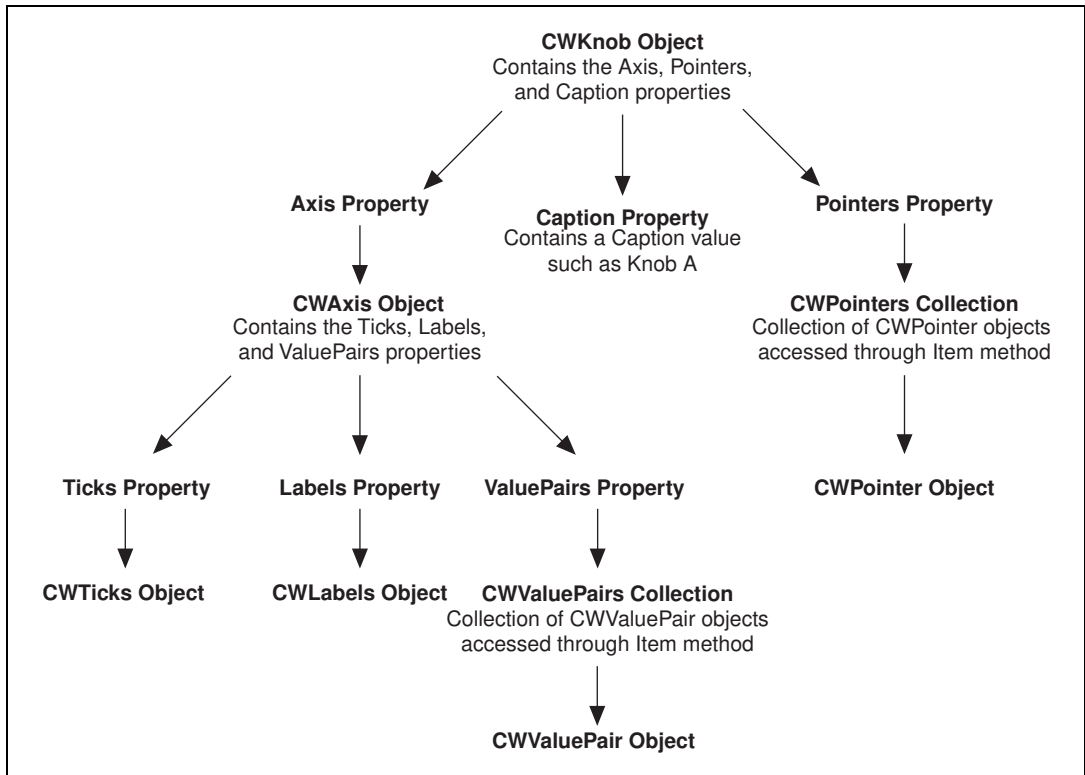
Figure 2-1 shows two Knob controls that might appear on a user interface. Each pointer, label, and value pair you see on the knob is an object. The ticks also are an object. Notice how each object contributes to the functionality of the entire knob. Pointers define the current value or values of each knob. Ticks help you determine the position of the pointers. Labels and value pairs describe the pointer positions by number or name.



**Figure 2-1.** Each Object Contributes to the Functionality of the Entire Control

By manipulating individual objects on the control, you can create two very different configurations. In Figure 2-1, Knob A uses a standard numerical scale from 0 to 10, while Knob B uses three value pairs instead, where Low equals 0, Medium equals 5, and High equals 10. Knob A has two pointers, yet Knob B has a single pointer. Notice the subtle differences in appearance as well. Knob A has ticks, while Knob B does not. Knob A uses three-dimensional pointers, and Knob B uses a thin pointer.

To manipulate an individual object, you must access it through the control hierarchy. Figure 2-2 demonstrates the link between software objects in the CWKnob control. The main object of the CWKnob control contains properties to store the value of the property, such as Caption, and other properties to access other objects in the control. For example, the `Axis` property accesses the `CWAxis` object, and the `Pointers` property accesses the `CWPointers` collection object.



**Figure 2-2.** Software Objects Access Other Objects through Properties and Methods

A *collection* is a special software object that manages a set of the same objects. For example, you might need two pointers on a knob or more than one axis on a graph. You might want to assign different styles to each object, including different styles on a pointer or different minimums and maximums, ticks, and labels on an axis. You can access an individual object, such as a CWPointer object or a CWAxis object, from the collection with the `Item` method.



**Tip** To learn more about the objects in the CWKnob control or the objects in any other ComponentWorks control, refer to the ComponentWorks online reference.

# What Are Properties and How Do I Get and Set Them?

---

A property is an attribute of a control. Properties for a control define how the control looks or behaves on the form or front panel of your user interface. For example, you can customize a button to resemble several different Boolean interfaces, such as a pushbutton, switch, or LED. Properties also can describe the current state of the control. For example, you can set the value of that Boolean button to on or off. You can set properties as you design your program through property pages, or you can get or set properties programmatically if you want to evaluate or change a property at runtime.

You'll need to set two types of properties: *control properties* and *environment properties*.

## Control Properties

Control properties relate directly to the functionality of the control and you set them programmatically or with the custom property pages, if the developers of the control created them. All ComponentWorks controls have custom property pages.

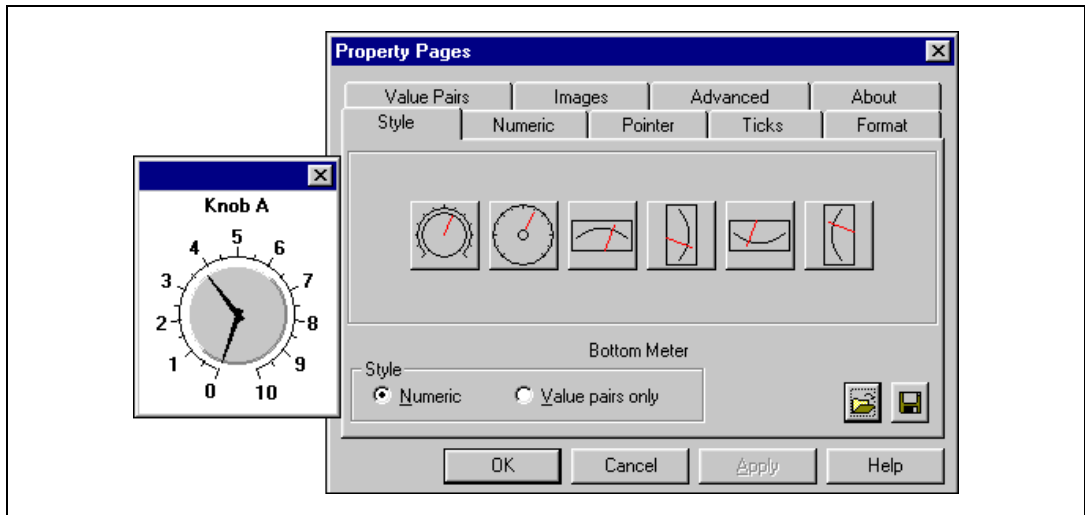
Use the property pages to set the property values for each ActiveX control while you are creating your program. The property values you select during design dictate the state of the control when you first run your program. However, if you need to change the property values during program execution, you can manipulate the properties programmatically.

## Environment Properties

Environment properties describe how an ActiveX control should interact with the environment and the rest of the user interface that you are developing. The development environment provides default properties for the name of the control (so that you can access the control programmatically), position in the user interface (so that you can precisely place the controls programmatically or interactively, rather than dragging and dropping), and tab stops (so that users can tab through the interface). You can modify these and more environment properties in the environment's default property pages.

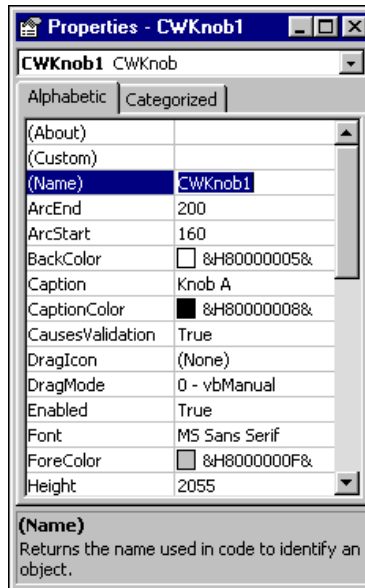
## Configuring Controls in Property Pages

You can set control properties in the custom property pages after you place the control on a form. To access the control property pages, right click on the control and select **Properties**. Although the layout and functionality of custom property pages varies among controls, you'll usually see a page or tabbed dialog box with a variety of properties that you can set for that particular control. The ComponentWorks User Interface custom property pages include a preview window so that when you modify a property, you can see how it affects the look of your control. Figure 2-3 shows the ComponentWorks custom property pages and preview window for the CWKnob control. Click **OK** when you want to apply the new properties and close the property pages.



**Figure 2-3.** Set Control Properties in the ComponentWorks Property Pages

You can modify environment properties after you place the control on a form. Although the location and layout of default property sheets varies among environments, you can usually access them from the **View** menu. In Visual Basic, select **View»Properties Window**. Figure 2-4 shows the Visual Basic environment properties for the CWKnob control.



**Figure 2-4.** Set Environment Properties in the Visual Basic Property Window

## Changing Properties Programmatically

Property pages provide a quick and easy way to set properties, but remember that you use property pages during design to set initial control properties, and you cannot access the property pages during program execution. If you need to change properties during program execution to respond to user or program events, modify parameters programmatically. For example, you might want to change the state of an LED indicator during program execution from false to true depending on the state of an assembly line. When the assembly line is moving, the state of the LED is true, and when the assembly line stops, the LED changes to false. When the line starts again, the LED reverts to true.

Each control you create in your program has a name that you use to reference the control in your program. The environment assigns a default name, and you can change the name in the environment's default property sheets. To access a property programmatically, use the name of the control and the property in dot notation, as in the following syntax:

```
control.property = value
```

For example, to change the value property of the LED to false, use the following line of code:

```
CWButton1.Value = False
```

In this example, `CWButton1` is the default name of the LED control, and `Value` is the property that specifies the current value of the control.



**Tip** The ComponentWorks Button (`CWButton`) supports many different display styles, including slide switches, toggle switches, push buttons, command buttons, custom bitmap buttons, and LEDs. To learn more about `CWButton` and controlling it programmatically, refer to the ComponentWorks online reference.

In Visual Basic most controls have a default property such as `Value`. You can access the default property of a control by using its control name (without the property name attached), as in the following example:

```
CWKnob1 = 5.0
```

is programmatically equivalent to

```
CWKnob1.Value = 5.0
```

Some controls consist of several objects, and one object can access another object through a property with the following syntax:

```
control.object.property
```

For example, you can access the `CWAxis` object from the `CWKnob` object with the `Axis` property. To get the minimum value of the axis, use the following syntax:

```
minimum = CWKnob1.Axis.Minimum
```

In this example, the minimum value of the axis on the knob is read and stored in a variable named `minimum`. `CWKnob1` is the default name of the control, `Axis` is the property that accesses the `CWAxis` object, and `Minimum` is the name of the property on the `CWAxis` object.

You can display the minimum value of the axis in a Visual Basic text box named `Text1` on the user interface with the following syntax:

```
Text1.Text = CWKnob1.Axis.Minimum
```

Or you can print the minimum value of the axis:

```
Print CWKnob1.Axis.Minimum
```

## What Are Methods and How Do I Call Them?

---

A method is a defined function within the control that you use to perform an action, like starting or stopping an acquisition or plotting data on a graph. You call methods as you would any function in your programming environment.

### Calling Methods

The following syntax shows you how to call a simple method that does not require parameters:

```
control.method
```

If the method accepts parameters, use the following syntax, listing as many parameters as needed:

```
control.method parameter1, parameter2
```

If the method returns a value and you want to save the result, enclose the parameters in parentheses, as in the following syntax:

```
result = control.method(parameter1, parameter2)
```

For example, the ComponentWorks Analog Input (CWAI) control returns a value after completing the `AcquireData` method, which synchronously runs an acquisition. The returned value indicates if the operation completed successfully or if a warning or error occurred. In the following example, the value returned from the `AcquireData` method is assigned to a variable (`lErr`):

```
lErr = CWAI1.AcquireData(ScaledData, BinaryCodes, 1)
```

You'll see two different types of parameters: required and optional. The method needs required parameters to perform its primary action. The method can use optional parameters to take more precise actions or take advantage of additional features of the method.



**Tip** If you are unsure whether a parameter is optional, refer to the Visual Basic Object Browser or code completion. Visual Basic encloses optional parameters in square brackets.

Although you must include required parameters when you call the method, you do not have to specify any optional parameters. For example, the `PlotY` method for the ComponentWorks Graph (CWGraph) has a required parameter—the array of data that you want to plot on the graph. The following line of code plots the array `ScaledData`:

```
CWGraph1.PlotY ScaledData
```

The `PlotY` method also has optional parameters. For example, you can pass a second parameter to represent the initial value for the x-axis, a third parameter for an incremental change on the x-axis corresponding to each data point, and a fourth parameter that determines whether a column of data or a row of data is plotted:

```
CWGraph1.PlotY ScaledData, 10.0, 0.1, True
```

## Working with Collections

Collections are special objects that manage a set of like objects. For example, a `CWPointers` collection object manages a varying number of `CWPointer` objects.

### Managing Collections

You can add or remove individual objects from a collection with the following syntax:

```
'Add a new pointer to the Knob.
CWKnob1.Pointers.Add

'Remove the second pointer on the Knob.
CWKnob1.Pointers.Remove 2

'Remove all pointers on the Knob.
CWKnob1.Pointers.RemoveAll
```



**Note** A collection of objects is an array of objects, where the first object is at index 1.

### Accessing Objects with the Item Method

Each collection object contains an `Item` method that you can use to access any particular object stored in the collection. The `Item` method accepts one parameter—`Item`—that specifies the object you want to access through the index or name of the object in the collection.



For example, use the following syntax to set the value of the second pointer on a knob to 5:

```
CWKnob1.Pointers.Item(2).Value = 5.0
```

The term `CWKnob1.Pointers.Item(2)` refers to the second `CWPointer` object in the `CWPointers` collection of the `CWKnob` object. In this example, the `Item` parameter is an integer representing the one-based index of the object in the collection. If you assign names to the objects in a collection, you can pass the `Item` method a string containing the name of the object you want to access. In the following example, the `CWPointer` object named `TemperaturePointer` is being set to 25:

```
CWKnob1.Pointers.Item("TemperaturePointer") = 25.0
```

The `Item` method is the most commonly used method on a collection and is referred to as the *default method*. Many programming environments, including Visual Basic, do not require you to explicitly include the default method in the syntax. Visual Basic will accept either of the following forms:

```
'Item method specified.
collection.Item(Index).property
```

or

```
'Item method implied as default method.
collection(Index).property
```

Therefore,

```
'Set the second pointer to 5.
CWKnob1.Pointers.Item(2).Value = 5.0
```

is programmatically equivalent to

```
'Set the second pointer to 5.
CWKnob1.Pointers(2).Value = 5.0
```

## What Are Events and How Do I Define Them?

---

An event is a notification generated by an ActiveX control in response to some particular occurrence in the program, perhaps a mouse click on a user interface button, a change in the value of a knob, or a completed acquisition. Events exist so you can define the tasks your program should perform when that event occurs. You define those tasks in an *event procedure*. Every time that event occurs, your event procedure is called to process the event.

In event-driven programming, the program continuously runs and waits for events to occur rather than continuously polling to determine if something has changed, as in a loop-driven program. When an event occurs, the program responds to it by executing the appropriate event procedure and waiting for the next event to occur. Loop-driven programs execute code sequentially from top to bottom and then loop back to the top to start executing the same code over and over. Loop-driven programs often take more processor time and respond slower to more frequent events. Event-driven programming saves processor time, requires less code, and enables you to add new controls with new functionality without rewriting any loop-driven code.

To develop an event procedure for an ActiveX control in Visual Basic, double click on the control to open the code editor, which automatically generates a default event procedure for the control. The event procedure skeleton includes the control name, the default event, and any parameters that are passed to the event procedure. The following code is an example of the event procedure generated when the value of the knob is changed by the user or by some other part of the program:

```
Private Sub CWKnob1_PointerValueChanged(ByVal_
    Pointer As Long, Value As Variant)

End Sub
```

Notice that the event contains two parameters: `Pointer` and `Value`. `Pointer` is the index of the pointer that changed and `Value` is the new value of the selected pointer. You can use these parameters in your event procedure to help you process the event. For example, you can use the `Value` parameter to scale a data point named `data` by the new value of the pointer as soon as it changes:

```
Private Sub CWKnob1_PointerValueChanged(ByVal_
    Pointer As Long, Value As Variant)
    'data is a global variable.
    data = data * Value
End Sub
```



**Note** You can use the underscore line-continuation character to span a single statement over several lines of code, which is especially useful for displaying long strings in your code. The underscore line-continuation is used throughout this manual to indicate that a line of code continues; however, you can remove the continuation character when you include a complete statement on a single line.

Alternatively, you can generate an event procedure in the code editor. Figure 2-5 shows how to create the event procedure for the `KeyPress` event on a `CWKnob1` control named `CWKnob1`. Select the control from the left list and then the event you want to define from the right list of the code editor.

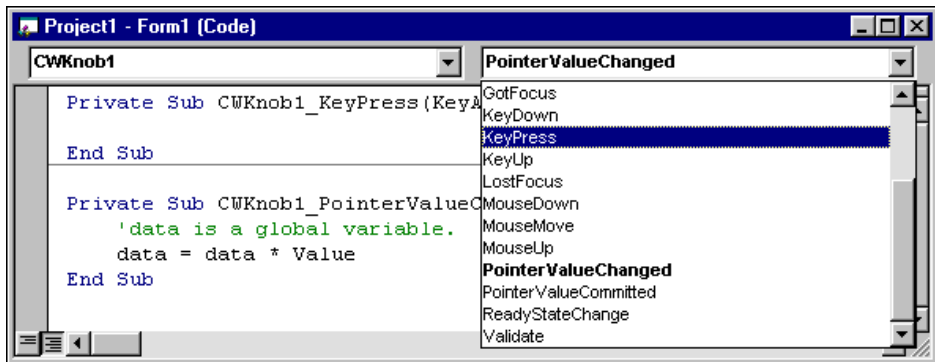


Figure 2-5. Selecting Events in the Code Editor



**Tip** Use the code editor to generate any event procedure for any control on the form without switching back and forth to the form window.

## How Do I Benefit from Using ActiveX Controls?

Custom ActiveX controls address your specific industry needs. For example, ComponentWorks provides measurement and automation tools to help you develop custom measurement and automation applications in the environment that you choose. Furthermore, ActiveX controls are tools for developing event-driven applications, they are easy to configure and use, and they can help you create your own reusable software components.

- **Work in any ActiveX control container.** ActiveX controls enable you to implement component-based software in any ActiveX control container. Many integrated development environments are ActiveX control containers because they support the standard interfaces needed to communicate with ActiveX controls. Microsoft Visual Basic, Visual C++, Excel, Word, Internet Explorer, and Borland Delphi users can take advantage of ActiveX controls in their development environment or Microsoft Office tool.

ActiveX control containers offer standard tools to help you develop basic interfaces and programs, but you often need custom tools to create your applications. Custom ActiveX controls provide specific

functionality that is not available through native controls in your development environment, and they enable you to get the exact functionality you need without leaving your development environment. Furthermore, custom ActiveX controls are widely distributed across the Internet, so you can find a custom control for almost anything you can imagine.

- **Develop event-driven programs.** ActiveX controls are tools for developing event-driven programs, rather than loop-driven programs. In event-driven programming, the program runs continuously waiting for events to occur. When an event occurs, the program responds to it and then waits for the next event to occur. Event-driven programming saves processor time, requires less code, and enables you to add new controls with new functionality without rewriting any loop-driven code.
- **Easily configure and use ActiveX controls.** ActiveX controls deliver an easy-to-use property page interface for configuring controls during design time; a simplified API for accessing properties, methods, and events programmatically; and 32-bit performance. Furthermore, ActiveX controls communicate with the container, so you can take advantage of your development environment's features, such as the Visual Basic Object Browser and code completion.
- **Create your own software components.** ActiveX controls are easy to develop in Microsoft Visual Basic. You can combine many different ActiveX controls on one form to create a single component that contains the exact functionality that you need. You then can use your custom component as a reusable software component in other programs or in HTML files to add interactive functionality to a Web page. Web browsers with ActiveX support, including Internet Explorer 3.0 or later and Netscape with the ActiveX plug-in, can view the embedded control.

---

# Getting Started with ComponentWorks in Visual Basic

In this chapter, you will practice using ComponentWorks in Visual Basic. At the end of this tutorial, you will have learned to design a graphical user interface; acquire, visualize, and analyze data; and distribute your completed program.



**Tip** Refer to the Microsoft Visual Basic documentation if you need more information about programming in Visual Basic after completing this tutorial. If you are an advanced Visual Basic programmer and need more information about developing programs with ComponentWorks, refer to the ComponentWorks online reference (**Start»Programs»National Instruments»Measurement Studio»Online Help»ComponentWorks Reference for Visual Basic**).

You need the following tools to complete this tutorial:

- Microsoft Visual Basic. Although this example uses Visual Basic 6 terminology, you can implement the example in Visual Basic 4 or later.
- National Instruments ComponentWorks. If you have not purchased a licensed version of ComponentWorks, visit the National Instruments ComponentWorks Web site at [www.ni.com/cworks](http://www.ni.com/cworks) and follow the links to download ComponentWorks evaluation software.
- National Instruments DAQ hardware and NI-DAQ 6.5 or later. Or you can experiment with the Serial, GPIB, or VISA controls if you have serial, GPIB, or VXI instruments or controllers.

---

## Creating a ComponentWorks Project Template

**Goal** Create a project template to hold all of the components needed to develop similar programs. Templates provide a way for you to reuse components and code. For example, if you develop a lot of acquisition programs, you might have a template named *Acquisition* that includes the ComponentWorks DAQ and User Interface controls and perhaps even a standard interface that simulates your acquisition process. If you develop a lot of

automation projects, you might have a template named *Automation* that contains the ComponentWorks User Interface, Automation Symbols, and PID components and a standard user interface that simulates the process on your production floor.

For this tutorial, you'll create a standard ComponentWorks template (CWProject) that contains the ComponentWorks User Interface, DAQ, and Analysis controls. You can use the template over and over as you develop similar programs.

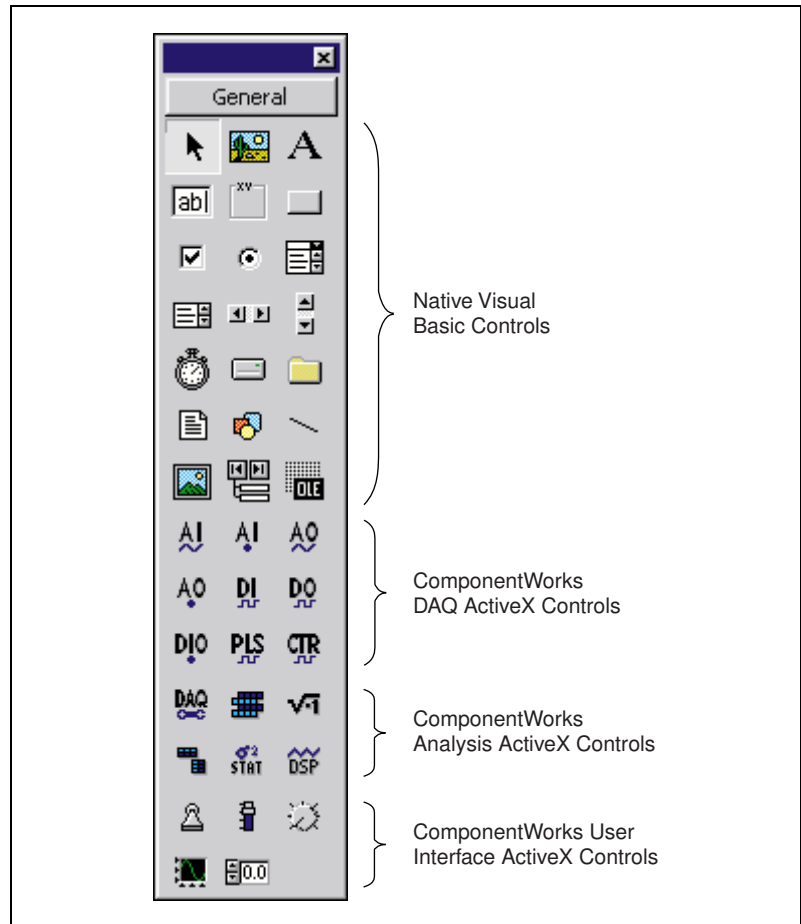
1. Launch Visual Basic.
2. Open a new Standard EXE project.
3. Right click on the Visual Basic Toolbox and select **Components**.
4. Select **National Instruments CW Analysis**, **National Instruments CW DAQ**, and **National Instruments CW UI**.



**Note** If you don't see the controls you want to load, press the **Browse** button and select the following ActiveX control files from your Windows System folder: `cwanalysis.ocx`, `cwdaq.ocx`, and `cwui.ocx`. Depending on the ComponentWorks package you own, you might have the following ComponentWorks controls to include in this or other project templates:

- |                                         |                              |
|-----------------------------------------|------------------------------|
| • 3D Graph Control                      | <code>cw3dgrph.ocx</code>    |
| • Instrument Controls (GPIB and Serial) | <code>cwinstr.ocx</code>     |
| • VISA Control                          | <code>cwvisa.ocx</code>      |
| • IVI DMM Control                       | <code>CWIVIvDmm.ocx</code>   |
| • IVI Scope Control                     | <code>CWIVIvScope.ocx</code> |
| • IVITools Control                      | <code>CWIVIvTools.ocx</code> |
| • DataSocket Control                    | <code>cwds.ocx</code>        |
| • IMAQ Vision                           | <code>cwimaq.ocx</code>      |
| • Automation Symbols                    | <code>cwas.ocx</code>        |
| • Autotuning PID                        | <code>cwpid.ocx</code>       |

- Click **OK**. Visual Basic loads the ComponentWorks controls into the Toolbox, as shown in Figure 3-1.



**Figure 3-1.** Loading the ComponentWorks Controls into the Toolbox

- Save the form and project in the Visual Basic \Template\Projects directory as CWForm and CWProject.

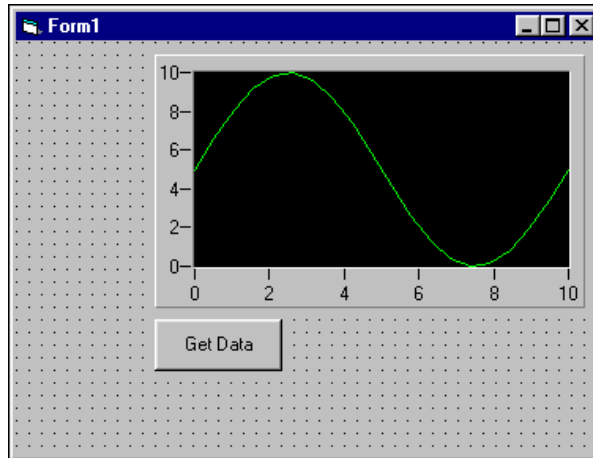


**Tip** Only projects found in the \Template\Projects directory appear in the New Project dialog box. You can change the path for your template directory in the Visual Basic options (**Tools>Options>Environment**).

- Close the project.

## Visualizing Data on a User Interface

**Goal** Create a user interface to get and display data. The interface is very simple, consisting of a graph and **Get Data** button, as shown in Figure 3-2. When the program is complete, you'll be able to press the **Get Data** button and display an array of random numbers on the graph.



**Figure 3-2.** Creating a Simple User Interface

1. Open a new Visual Basic project with the CWProject template from the New Project dialog. Notice that you have a new project with the ComponentWorks controls already loaded. Refer to [Creating a ComponentWorks Project Template](#) for information about creating the CWProject template.
2. Place a ComponentWorks Graph (CWGraph) control on the form. A form is the window or area on the screen on which you place controls and indicators to create the user interface for your program. Select the CWGraph icon from the Visual Basic Toolbox, and use your mouse to click and drag on the form where you want the graph to appear.



**Tip** If you have trouble finding a control in the Toolbox, hold your mouse over each control icon to see the tooltips.



3. Select the graph, and look at the most important environment property in the Visual Basic Properties window—the control name. **Name** is the most important environment property because it's the name you'll use to programmatically access and control the graph. Visual Basic named the CWGraph control **CWGraph1**.



4. Double click on the CommandButton control icon in the Toolbox to place a pushbutton control on the form. Notice that Visual Basic places the control in the middle of the form.



**Tip** You can place controls on the form two ways. Either double click on a control in the Toolbox or select it and click and drag on the form to place the object. If you double click on the control in the Toolbox, Visual Basic places the control in the middle of the form. Use your mouse to move and resize the control.

5. Click and drag on the button to move it below the graph.

The CommandButton control is a native Visual Basic control. One of the benefits of developing programs with ActiveX controls is that you can use the control that provides the exact functionality your program requires, whether it is a native Visual Basic control or a custom ActiveX control like the ComponentWorks Graph.

Because the CommandButton is a native Visual Basic control, it has only one set of properties (environment properties), so you will use only the Visual Basic Properties window to set properties for this control. Notice that Visual Basic named this control **Command1**, which is not very descriptive. Change the name to **cmdGetData**.



**Tip** Quite a few naming conventions for variables and constants exist, but the most common one is the Hungarian notation. With this notation, each variable and constant name is preceded by three to four letters that reflect the data type. For instance, *txt* precedes a name for a TextBox, *cmd* refers to a CommandButton, and *lbl* represents a Label. You can find many more of these prefixes in Visual Basic guides.

6. Change the **Caption** property to **Get Data**. To edit a property, highlight the property value on the right side of the property window and type in the new value.

With the user interface completed, you can write code to generate data and display it on the graph. There's only one event—pressing the **Get Data** button. When you press the button, an array of random numbers is generated and plotted on the graph.

7. Double click on the **Get Data** command button. The code editor opens with the event procedure skeleton, as follows:

```
Private Sub cmdGetData_Click()
End Sub
```

The first line indicates that you are writing a procedure to be called every time the user clicks on the cmdGetData object (the **Get Data** button).

8. The following procedure declares two variables: `data` is the array of generated Y values to be plotted on the graph, and `i` is the loop counter. Each time the loop runs, a Y value is created with the Visual Basic `Rnd` method and added to the `data` array. The loop iterates 50 times to create an array of 50 Y values, and then the procedure plots the data. Insert the bolded code in the event procedure:

```
Private Sub cmdGetData_Click()
    Dim data(0 to 49) As Double, i
    For i = 0 To 49
        data(i) = Rnd * 10
    Next i
    CWGraph1.PlotY data
End Sub
```



**Tip** Take advantage of code completion in Visual Basic 5 and later. After you enter the name of a control and a period, the code editor prompts you with a list of available properties and methods.



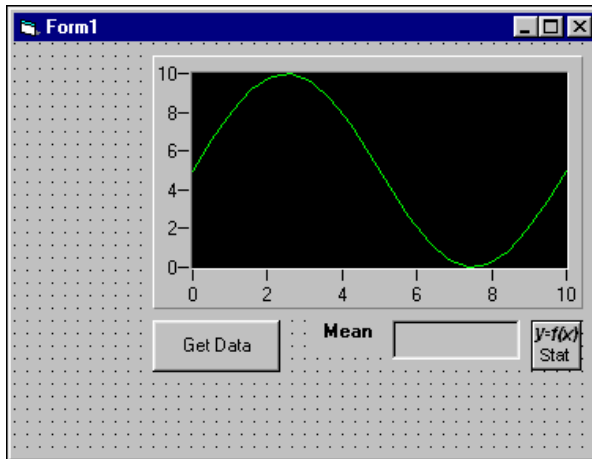
9. Test the program. Press the **Start** button in the Visual Basic toolbar to start the program, and then press the **Get Data** button. The graph plots all 50 points of data and stops, waiting for the next event to occur. You can press the **Get Data** button again, and another 50 points are plotted on the graph.



10. Press the **End** button in the Visual Basic toolbar to stop the program and return to design mode.

# Analyzing Data

**Goal** Find and display the mean value of the data you are generating. Figure 3-3 shows the new interface, which uses the ComponentWorks Statistics (CWStat) control to find the mean and a Visual Basic Label control to display the value.



**Figure 3-3.** Analyzing Data



1. Place a Visual Basic Label on the form to display the mean value. Change the control name to **lblMeanValue** and the border style to **Fixed Single**. Also, delete the default caption text so that the indicator will be empty, rather than displaying **Label1**, when the program first runs. Use an additional Visual Basic Label to identify the indicator as the mean.



2. Place a CWStat control on the form and use its **Mean** method to find and display the mean value. Notice that Visual Basic names this control **CWStat1**.



**Note** To access the functionality of any ActiveX control, whether graphical or non-graphical, you have to place the control on the form. If the control does not have a graphical interface, it does not appear on the user interface during runtime. For example, you have to place the CWStat control on the form to access its functionality, but it does not appear on the user interface during runtime.

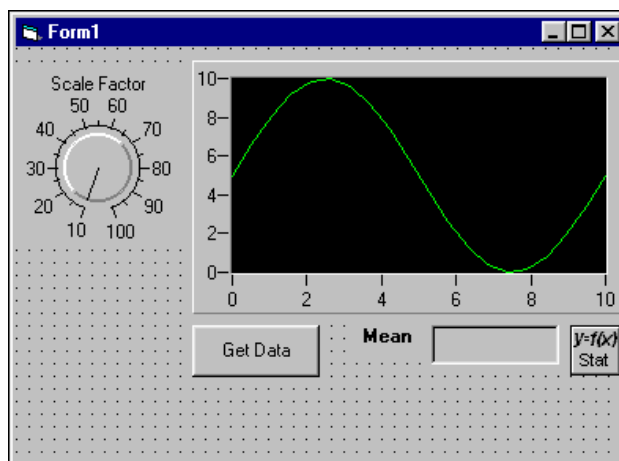
3. Add the bolded code to the existing event procedure to find the mean value in data (the array of generated data) and display it as the caption in the lblMeanValue indicator:

```
Private Sub cmdGetData_Click()
    Dim data(0 to 49) As Double, i
    For i = 0 To 49
        data(i) = Rnd * 10
    Next i
    CWGraph1.PlotY data
    lblMeanValue.Caption = CWStat1.Mean(data)
End Sub
```

4. Run the program and press the **Get Data** button to display the mean value. Press **Get Data** again, and notice that the mean value changes because a new set of random data was generated. Stop the program when you finish testing.

## Interacting with the Data

**Goal** Interact with the data from the user interface. For this example, scale the data by the value that appears on a knob, as shown in Figure 3-4.



**Figure 3-4.** Interacting with Data



1. Place a ComponentWorks Knob (CWKnob) control on the form as shown in Figure 3-4. Notice that Visual Basic names the control **CWKnob1**. Right click on the knob and select **Properties** to modify its custom properties. On the Numeric page, change **Minimum** and **Maximum** to **10** and **100**, so that you can scale the data by 10 to 100. Make the knob caption display **Scale Factor**. Click **OK**.
2. Modify the bolded line of code as follows to scale the data according to the value of the knob on the user interface:

```
Private Sub cmdGetData_Click()
    Dim data(0 to 49) As Double, i
    For i = 0 To 49
        data(i) = Rnd * CWKnob1.Pointers(1).Value
    Next i
    CWGraph1.PlotY data
    lblMeanValue.Caption = CWStat1.Mean(data)
End Sub
```

3. Run the program and press **Get Data**. Notice that the data looks similar because the data is scaled by 10, as it was before. Turn the knob to 50 and press **Get Data** again. Notice that the mean value increases and the graph has autoscaled to accommodate larger values. Stop the program when you finish testing.

## Acquiring Analog Data

**Goal** Acquire live data from a DAQ device. You already know how to visualize, analyze, and interact with data, and now you can use the ComponentWorks Analog Input (CWAi) control to add analog input functionality.



**Note** You need a National Instruments DAQ board installed and configured to run this example. Alternatively, if you have a serial, GPIB, or VXI instrument or controller, you can use an Instrument control rather than the CWAi control. Load the Instrument and VISA controls to the Visual Basic Toolbox and use the correct commands to read from the instrument if you use them.

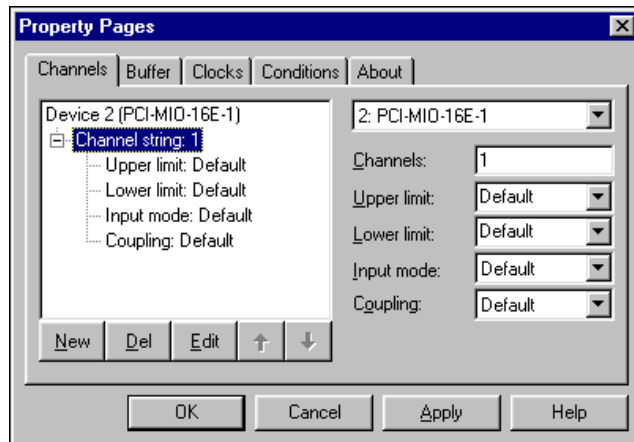


1. Place a CWAi control on the form. Notice that Visual Basic named it **CWAI1**. After placing the control on the form, use the ComponentWorks custom property pages to interactively select your device and acquisition settings.



**Tip** Right click on any ComponentWorks control and select **Properties** to set custom properties for that control.

2. Select your data acquisition device from the drop-down list.
3. Click the **New** button to create a new CWAChannel object. A CWAChannel object holds the configuration for the channel or set of channels that you want to read. You can add more CWAChannel configurations with the **New** button or delete existing configurations with the **Del** button.
4. Type **1** or the channel you want to read in **Channels**. Figure 3-5 shows how your Channels property page might look.



**Figure 3-5.** Configuring Analog Input Channels



**Tip** If you configure named channels with National Instruments Measurement & Automation Explorer, you can use named channels rather than channel numbers.

5. On the Buffer page, change the **Number of scans to acquire** to 50 so that only 50 points of data are acquired.
6. Click **OK** to apply the settings and close the property pages.

Consider how this program will work with its new interface and analog input feature. You will press **Get Data** and then wait for the data to appear on the graph and the mean to be displayed in the indicator. You then might change the scale factor with the knob and press **Get Data** again. Now consider what you need to do programmatically to make it work.

First, the board needs to be configured with the settings from the CWA channel property pages and then it needs to acquire 50 data points. When all 50 points have been acquired, the CWA channel control will generate the `AcquiredData` event, indicating that the data has been acquired and is

ready for some sort of processing. For this example, you can use the `AcquiredData` event to scale and plot all 50 data points and then calculate the mean. Therefore, you need to modify the existing event procedure for the **Get Data** button and create a new event procedure to handle the data after it is acquired.

7. Modify the event procedure for the **Get Data** button as follows, making sure to delete existing lines of code that do not appear below:

```
Private Sub cmdGetData_Click()  
    'Configure the device with settings from the  
    'CWA1 property pages.  
    CWA11.Configure  
    'Start the acquisition.  
    CWA11.Start  
End Sub
```

8. Double click on the CWA1 control to create the `AcquiredData` event procedure skeleton and then add the bolded code to the procedure:

```
Private Sub CWA11_AcquiredData(ScaledData _  
    As Variant, BinaryCodes As Variant)  
    Dim i  
    'Scale each point with the value from the knob.  
    For i = 0 To 49  
        ScaledData(i) = ScaledData(i) *_  
        CWKnob1.Pointers(1).Value  
    Next  
    'Plot the scaled data.  
    CWGraph1.PlotY ScaledData  
    'Find and display the mean.  
    lblMeanValue.Caption = CWStat1.Mean(ScaledData)  
End Sub
```



**Note** Notice that the Variant `ScaledData` holds all acquired data. The CWA1 control passes this array to the event procedure so that the data can be processed.

9. Run the program. Press **Get Data**, and watch the graph plot all 50 points of data and stop, waiting for the next event to occur. Change the scale factor to see how the graph and mean change. Press **Get Data** again, and watch another 50 points get plotted on the graph. Stop the program when you finish testing.

## Continuously Acquiring and Charting Data

**Goal** Acquire and chart a continuous stream of data from your analog input device.

1. Use the Conditions property page for the CWAI control to set the stop condition to **Continuous**. A stop condition specifies when the DAQ device should stop acquiring data after the acquisition is started. The **Continuous** option keeps the acquisition running until a user stops the program.
2. Modify the graph plot method to display the data on a strip chart:

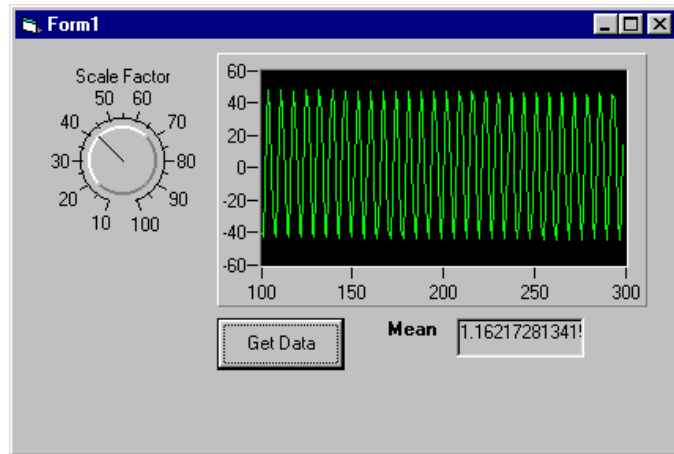
```
Private Sub CWAI1_AcquiredData(ScaledData _
    As Variant, BinaryCodes As Variant)
    Dim i
    'Scale each point with the value from the knob.
    For i = 0 To 49
        ScaledData(i) = ScaledData(i) * _
            CWKnob1.Pointers(1).Value
    Next
    'Chart the scaled data.
    CWGraph1.ChartY ScaledData
    'Find and display the mean.
    lblMeanValue.Caption = CWStat1.Mean(ScaledData)
End Sub
```



**Note** PlotY and ChartY are the two most common methods for passing data to a graph. Use PlotY when you have a finite number of points and you don't need to see data that was visualized before the current data set. Use ChartY to continuously display data, as on a strip chart, and set the ChartLength property to keep a record of historical data.

3. Test the program. Run the program and press the **Get Data** button. Figure 3-6 shows the program during runtime. Notice that data is continuously acquired and displayed on the graph like a strip chart. Try changing the scale factor, and notice how the graph and mean respond to scaling. Stop the program when you finish testing.





**Figure 3-6.** Continuously Acquiring and Charting Data

4. Save the project and form as `Acquire Data`.

## Error Handling

**Goal** Include error handling in your program so that it can continue running if an error occurs. If you don't include error handling, the ComponentWorks controls generate exceptions when errors occur, forcing you to terminate your program. Use the Visual Basic `On Error` statement or the I/O control return values and error events to handle errors so that your program can continue to run.

### Visual Basic On Error Statement

Use the `On Error` statement to handle errors, as in the following examples. Refer to the Visual Basic documentation for more information about the `On Error` statement.

- `On Error Resume Next` enables the program to continue running at the next line. To handle an error in this mode, check and process the information in the `Err` object in your code, as in the following example:

```
Private Sub Acquire_Click()
    On Error Resume Next
    'Configure.
    CWAI1.Configure
```

```

        'Display error message if one occurs
        'during Configure.
        If Err.Number <> 0 Then MsgBox "Configure: " _
            + CStr(Err.Number)
        'Start the acquisition.
        CWAI1.Start
        'Display error message if one occurs
        'during Start.
        If Err.Number <> 0 Then MsgBox "Start: " _
            + CStr(Err.Number)
    End Sub

```

- On Error GoTo enables the program to continue running at the specified location in the procedure. In the following example, the same error handler is called if an error occurs with either Configure or Start:

```

Private Sub Acquire_Click()
    On Error GoTo ErrorHandler
    CWAI1.Configure
    CWAI1.Start
    Exit Sub

    'Display error message if one occurs
    'during Configure or Start.
ErrorHandler:
    MsgBox "DAQ Error: " + CStr(Err.Number)
    Resume Next
End Sub

```



**Tip** Use the ComponentWorks DAQTools (CWDAQTools) control and the `GetErrorText` method to convert an error code into descriptive error information. The following example saves the return code in the `DAQError` variable and, if the value indicates a warning or event, uses the `GetErrorText` method to retrieve textual information about it:

```

'Get return code.
DAQError = CWAI1.Start
If DAQError <> 0 Then
    'Display message box with error information.
    MsgBox CWDAQTools1.GetErrorText (DAQError)
End If

```

## Return Values

The ComponentWorks I/O controls (DAQ, Instrument, VISA, IVI, and IMAQ) can return error codes rather than generating exceptions, which force you to enter debug mode or terminate the program. Error codes are generated by hardware controls if an error occurs during specific contexts of an operation.

If you set the `ExceptionOnError` property to false, the I/O control methods do not generate exceptions but return a status code that indicates whether the operation completed successfully. If the return value is something other than zero, a warning or error occurred. Positive return values indicate that a problem occurred in the operation, but that the program can continue running. Negative return values indicate that a critical problem has occurred in the operation and that all other functions or methods depending on the failed operation also will fail.

To retrieve the return code from a method call, assign the value of the function or method to a long integer variable and check the value of the variable after calling the function or method. For example, the following code checks the return value of the `Start` method on a `CWAI` control:

```
'Get the return value for the Start method.
lerr = CWAI1.Start
'Display an error message if one occurred.
If lerr <> 0 Then MsgBox "Error at DAQ Start: " & _
    + CStr(lerr)
```

If you want to check the return value in several different event procedures, write one error handler for your program rather than duplicating it for every call to a function or method. Remember that you can use the ComponentWorks DAQTools (`CWDAQTools`) control and the `GetErrorText` method to convert an error code into descriptive error information. For example, the following code creates a `LogError` subroutine to use with the `Start` method and later functions or methods:

```
Private Sub LogError(code As Long)
    'Display error if one occurs.
    If code <> 0 Then
        MsgBox "DAQ Error: " & _
            CWDAQTools1.GetErrorText(code)
    End If
End Sub
```

Call `LogError` before every function or method call, as in the following line of code:

```
LogError CWait1.Start
```

The return value is passed to `LogError` and processed.

## Error and Warning Events

The DAQ controls include their own error and warning events (`DAQError` and `DAQWarning`), and the Instrument, VISA, IVI, and IMAQ controls include an error event. Using warning and error events, you can develop event procedures for error checking asynchronous operations, such as continuous analog input or asynchronous instrument control.

By default, only asynchronous operations call error and warning events. If you are working with the ComponentWorks DAQ controls, you can use the `ErrorEventMask` property to force other operations or contexts to generate error and warning events. Refer to the online reference for information about the `ErrorEventMask` property.

## Testing and Debugging

---

**Goal** Test and debug your program as needed. Visual Basic provides many debugging tools. If you experience some unexpected behavior in your program, use these tools to locate and correct the problem. Refer to your Visual Basic documentation for more information about debugging techniques.

## Printing Variables during Program Execution

One of the most common debugging methods is to print out or display important variables throughout program execution. You can monitor critical values and determine when your program varies from the expected progress. Some programming environments have dedicated debugging windows that are used to display such information without disturbing the rest of the user interface. You can use the `Debug.Print` command in Visual Basic to print information directly to the debug window. For example, the following code displays the first channel or channels that you are reading:

```
Debug.Print CWait1.Channels.Item(1).ChannelString
```

## Monitoring Variables during Program Execution

Use a watch window to display the value of a variable during program execution. You can use it to edit the value of a variable while the program is paused. In some cases, you can display expressions, which are values calculated dynamically from one or more program variables.

## Examining and Debugging during Program Execution

The Immediate window opens during runtime in break mode, which means that you can examine and debug your program while it is running. For example, you can type or paste a line of code and press <Enter> to run it. Or you can copy and paste code from the Immediate window into the code editor.



**Note** Visual Basic does *not* save the content of the Immediate window. Copy any code from the Immediate window that you want to save.

## Executing the Program One Line at a Time

Use *single stepping* to execute a program one line at a time to check variables and the output from your program as it runs. Single stepping is commonly used after a breakpoint to slowly step through a questionable section of code.

If you use *step into*, the program executes any code available for subroutines or function calls and steps through the code one line at a time. Use this mode if you want to check the code for each function called. The *step over* mode assumes that you do not want to go into the code for functions being called and runs them as one step.

In some cases, you might want to test a limited number of iterations of a loop but then run the rest of the iterations without stopping. For this type of debugging, several environments include the *step to cursor* or *run to cursor* options. Under this option, you can place your cursor at a specific point in the code, such as the first line after a loop and run the program to that point.

## Stopping Program Execution at Breakpoints

Most development environments include breakpoint options so you can suspend program execution at a specific point in your code. Breakpoints are placed on a specific line of executable code in the program to pause program execution.

Stopping at a breakpoint confirms that your program ran to the line of code containing the breakpoint. If you are unsure whether a specific section of code executes, place a breakpoint in the procedure to find out. Once you have stopped at a specific section of your code, you can use other tools, such as a watch window or debug window, to analyze or even edit variables.

In some environments, breakpoints might also include conditions so program execution halts if certain conditions are met. These conditions usually check program variables for specific values. Once you have completed the work at the breakpoint, you can continue running your program, either in the normal run mode or in some type of single-step mode.

## Preparing Your Program for Distribution

---

**Goal** Add finishing touches to the analog input program to prepare it for distribution. This section explains some Visual Basic features that you can use to further customize your programs. Refer to your Visual Basic documentation for more information about customizing your programs in Visual Basic.

### Positioning the Form on the Screen

You can use the Form Layout window to position the program form exactly where you want it to appear when your customer runs it. Select **View»Form Layout Window** and drag-and-drop the form anywhere on the Form Layout window screen.



**Tip** Right click in the Form Layout window and select resolution guides to help you precisely position the form or select a predefined startup position, such as the center of the screen.

### Customizing the Title Bar

You can set environment properties in the Visual Basic Properties window to further customize the form and its title bar. For example, change the **Caption** property to **Acquire Data** to customize the title bar text. You can specify the icon that the program displays in the title bar or Windows **Start** menu with the **Icon** property. You might use your company's icon or create a new icon for your custom program.

## Making an Executable

Now that you have a program to distribute to customers, Visual Basic makes it easy to create an executable version (.exe) so that your customers don't have to run the Visual Basic project. Anyone running Windows 2000/NT/9x can run Visual Basic executables. For this example, select **File»Make Acquire Data.exe** and complete the dialogs. To run the executable, double click the icon for the executable file.

## Building a Distributable Package

To install a program using ComponentWorks controls on another computer, you must install the necessary control files and supporting libraries. You can create an automatic installer to install your program and all the files needed to run that program or you can manually install the program and program files.

Whichever installation method you choose, you must install all necessary OCX files to enable your program to create the controls on a different computer, and you must register all OCXs with the operating system. You also need to install driver software and corresponding hardware if your program performs any I/O operations requiring separate driver software, such as data acquisition or GPIB. Remember to configure the software drivers.



**Note** You can redistribute the OCX files and related DLLs on your CD.

The Microsoft Visual Studio Package & Deployment Wizard provides tools to help you package all components you need to distribute and build an installer. This wizard automatically includes all ActiveX controls (OCXs) that you used, any system files required to run your program on another computer, dependency files to identify the run-time files needed to run the program on a different computer, and the Visual Basic run-time file needed to run any Visual Basic executable on a Windows computer. The wizard also lets you specify the default location of the installed files.



**Note** If you use the evaluation version of ComponentWorks to develop your program, the distributable version of your program will also use the evaluation version of ComponentWorks.

## Implementing a Full-Featured Application

---

You have created a simple, yet versatile program to acquire data from a DAQ device and visualize that data on a graph. Try adding the following features to this simple analog input example to create a more robust custom application:

- Additional interface controls to make the program more user friendly. Did you notice that to stop the acquisition you had to stop the Visual Basic program? Instead, you could place a **Stop** button on the user interface so that your customers don't have to quit the program every time they want to stop the acquisition.
- Data logging. Use Visual Basic to log data to a file as it is acquired, and then continue using your own software to analyze the data and generate reports. For example, you can import the data into Microsoft Excel or National Instruments HiQ and analyze it there. Refer to the *ComponentWorks Analog Input—Acquiring and Logging Data in Visual Basic* application note at [www.ni.com](http://www.ni.com).
- Internet connectivity with ComponentWorks DataSocket. Use the ComponentWorks DataSocket ActiveX control to publish live data over the Internet. Refer to the *Building an Interactive Web Page with DataSocket* application note [www.ni.com](http://www.ni.com).
- Multiple instrument control with DAQ, GPIB, Serial, VISA, or IVI. Control different kinds of instruments using the same program architecture. Refer to the Application Note library at [www.ni.com](http://www.ni.com) for technical papers and tutorials about instrument control.





---

# Technical Support Resources

This appendix describes the comprehensive resources available to you in the Technical Support section of the National Instruments Web site and provides technical support telephone numbers for you to use if you have trouble connecting to our Web site or if you do not have internet access.

## NI Web Support

---

To provide you with immediate answers and solutions 24 hours a day, 365 days a year, National Instruments maintains extensive online technical support resources. They are available to you at no cost, are updated daily, and can be found in the Technical Support section of our Web site at [www.ni.com/support](http://www.ni.com/support)

## Online Problem-Solving and Diagnostic Resources

- **KnowledgeBase**—A searchable database containing thousands of frequently asked questions (FAQs) and their corresponding answers or solutions, including special sections devoted to our newest products. The database is updated daily in response to new customer experiences and feedback.
- **Troubleshooting Wizards**—Step-by-step guides lead you through common problems and answer questions about our entire product line. Wizards include screen shots that illustrate the steps being described and provide detailed information ranging from simple getting started instructions to advanced topics.
- **Product Manuals**—A comprehensive, searchable library of the latest editions of National Instruments hardware and software product manuals.
- **Hardware Reference Database**—A searchable database containing brief hardware descriptions, mechanical drawings, and helpful images of jumper settings and connector pinouts.
- **Application Notes**—A library with more than 100 short papers addressing specific topics such as creating and calling DLLs, developing your own instrument driver software, and porting applications between platforms and operating systems.

## Software-Related Resources

- **Instrument Driver Network**—A library with hundreds of instrument drivers for control of standalone instruments via GPIB, VXI, or serial interfaces. You also can submit a request for a particular instrument driver if it does not already appear in the library.
- **Example Programs Database**—A database with numerous, non-shipping example programs for National Instruments programming environments. You can use them to complement the example programs that are already included with National Instruments products.
- **Software Library**—A library with updates and patches to application software, links to the latest versions of driver software for National Instruments hardware products, and utility routines.

## Worldwide Support

---

National Instruments has offices located around the globe. Many branch offices maintain a Web site to provide information on local services. You can access these Web sites from [www.ni.com/worldwide](http://www.ni.com/worldwide)

If you have trouble connecting to our Web site, please contact your local National Instruments office or the source from which you purchased your National Instruments product(s) to obtain support.

For telephone support in the United States, dial 512 795 8248. For telephone support outside the United States, contact your local branch office:

Australia 03 9879 5166, Austria 0662 45 79 90 0, Belgium 02 757 00 20, Brazil 011 284 5011, Canada (Calgary) 403 274 9391, Canada (Ontario) 905 785 0085, Canada (Québec) 514 694 8521, China 0755 3904939, Denmark 45 76 26 00, Finland 09 725 725 11, France 01 48 14 24 24, Germany 089 741 31 30, Greece 30 1 42 96 427, Hong Kong 2645 3186, India 91805275406, Israel 03 6120092, Italy 02 413091, Japan 03 5472 2970, Korea 02 596 7456, Mexico (D.F.) 5 280 7625, Mexico (Monterrey) 8 357 7695, Netherlands 0348 433466, Norway 32 27 73 00, Poland 48 22 528 94 06, Portugal 351 1 726 9011, Singapore 2265886, Spain 91 640 0085, Sweden 08 587 895 00, Switzerland 056 200 51 51, Taiwan 02 2377 1200, United Kingdom 01635 523545

# Glossary

---

## A

ActiveX	Set of Microsoft technologies for reusable software components. Formerly called <i>OLE</i> .
ActiveX control	Reusable software component that adds functionality to any ActiveX control container through exposed properties, methods, and events. The ComponentWorks Data Acquisition, User Interface, and Analysis controls are examples of ActiveX controls.
ActiveX control container	Development environment that fully supports ActiveX controls and integrates them into its own environment using COM. An ActiveX control container enables you to specify how ActiveX controls interact with the environment through environment properties. Visual Basic is an example of an ActiveX control container. <i>See also</i> <a href="#">environment property</a> .
analog I/O	Reading or writing data in continuously variable physical quantities, such as voltage or current.
API	Application Programming Interface. A specification of software functions and their input and return parameters.
array	Ordered, indexed set of data elements.
asynchronous	Function that begins an operation and returns control to the program prior to the completion or termination of the operation.

## B

breakpoint	Testing and debugging tool that allows you to select a program line at which execution will automatically stop.
------------	-----------------------------------------------------------------------------------------------------------------

## C

channel	Pin or wire lead to which you apply or from which you read the analog or digital signal.
code completion	Code writing feature that prompts you with next element in the line of code. In Visual Basic 5.0 and later, when you enter the name of a control, the code editor prompts you with the names of all available properties and methods.
code editor	Window where you write code. In Visual Basic, the code editor provides several features to make writing code easier: automatic code completion, automatic quick info, and bookmarks. The automatic quick info feature displays the syntax for statements and functions as you enter them in the code editor. Bookmarks mark lines of code in the code editor so that you can find and return to them later.
collection	Object that contains a number of objects of the same type, such as pointers, axes, and plots. In ComponentWorks, the name of the collection is the plural of the name of the objects in the collection. For example, a collection of CWAxis objects is called CWAxes. To reference an object in the collection, you must specify the object as part of the collection, usually by index. For example, <code>CWGraph.Axes.Item(2)</code> is the second axis in the CWAxes collection of a graph.
COM	Component Object Model. Microsoft specification for architecting and developing reusable software components.
control	<ol style="list-style-type: none"><li>1. ActiveX control. See <a href="#">ActiveX control</a>.</li><li>2. Object for entering or manipulating data on a user interface. Compare to <i>indicator</i>.</li></ol>
control property	Property that defines the way an ActiveX control looks and behaves. You can set control properties programmatically or with custom property pages.
counter/timer I/O	Reading or writing data based on high-precision timing through a counter or timer. By combining a counter with a highly accurate clock, you can create a wide variety of timing and counting applications, such as monitoring and analyzing digital waveforms and generating complex square waves.

**D**

DAQ	Data acquisition. Process of acquiring data, typically from A/D or digital input plug-in boards.
DataSocket	Technology that simplifies live data exchange between applications and HTTP, FTP, OPC, and file servers over the Internet. It provides one common API to a number of different communication protocols.
debug	Find and correct errors in a program.
device	Plug-in data acquisition board that performs analog input and output, digital input and output, and counter/timer operations.
device number	Slot number or board ID number assigned to the board when it is configured.
digital I/O	Reading or writing digital representations of data in discrete units (the binary digits 1 and 0). Digital information is either on or off.
DLL	Dynamic Link Library. A library of functions that link to a program and load at runtime rather than being compiled into the program. Loading libraries only when they are needed saves memory in software applications.
DMM	Digital Multimeter. A common measurement instrument that measures resistance, current, and voltage in a wide variety of applications.
dot notation	Programming syntax that allows you to access attributes and methods or functions on an object. For example, <code>object.attribute = value</code> allows you to set <code>attribute</code> on <code>object</code> to a new value.
driver	Software that controls a specific hardware device, such as a data acquisition board or GPIB interface board.

## E

environment property	Property that defines how an ActiveX control interacts with the development environment and the rest of the user interface that you are developing. The development environment provides default values for environment properties, but you can modify the default values to better integrate the ActiveX control in your program.
error	Critical problem in a software application that causes the operation or program to fail.
error event	Object-generated response to an error. The ComponentWorks DAQ, GPIB, Serial, VISA, IVI, and IMAQ I/O controls generate error events for which you can define event procedures. <i>See also</i> <a href="#">warning event</a> .
error handler	Function, subroutine, or section of code that processes errors if one should occur during program execution. Refer to the Visual Basic documentation for information about the <code>On Error</code> statement. <i>See also</i> <a href="#">error event</a> and <a href="#">warning event</a> .
event	Object-generated response to some action or change in state, such as a mouse click or a completed acquisition. The event calls an event procedure that processes the event. Events are defined as part of an ActiveX control object.
event-driven	Describes a program that runs continuously, waiting for an event to occur. When an event occurs, the program calls the appropriate event procedure. Compare to <i>loop-driven</i> , where a program continuously polls to find out if anything has changed.
event procedure	User-defined function called in response to an event from an object. <i>See</i> <a href="#">event</a> .
exception	Error message generated by a control and sent directly to the application or programming environment containing the control.
executable	Program file with a <code>.exe</code> extension that you can run independently of the development environment in which it was created.

## F

form	Window or area on the screen on which you place controls and indicators to create the user interface for your program.
FTP	File Transfer Protocol. Protocol based on TCP/IP to exchange files between computers.
FTP Server	Application running on a computer that enables the storing and retrieving of files by different clients via FTP. Most FTP servers allow anonymous connections so that any networked user can exchange files.

## G

GPIB	General Purpose Interface Bus. The standard bus used for controlling electronic instruments with a computer. Also called <i>IEEE 488 bus</i> because it is defined by ANSI/IEEE Standards 488-1978, 488.1-1987, and 488.2-1987.
GUI	Graphical User Interface. A user interface that has graphics, controls, indicators, and/or menus.

## H

HTML	HyperText Markup Language. Syntax used to build Web pages. HTML files are downloaded from an HTTP server and viewed in a Web browser, such as Internet Explorer.
HTTP	HyperText Transfer Protocol. Protocol based on TCP/IP, which is used to download Web pages from an HTTP server to a Web browser.
HTTP Server	Application running on a computer that serves Web pages and other information to client computers using HTTP. Clients display Web pages in Web browsers but can retrieve information using other tools, like a DataSocket client.
Hungarian notation	Object-naming notation where each variable and constant name is preceded by three to four letters that reflect the data type. For example, <code>intValue</code> is a variable of type integer.

## I

I/O	Input/Output. The transfer of data to or from a computer system involving communication channels, operator interface devices, and/or data acquisition and control interfaces.
IEEE 488	Shortened notation for ANSI/IEEE Standards 488-1978, 488.1-1987, and 488.2-1987. <i>See also</i> <a href="#">GPIB</a> .
IMAQ Vision	National Instruments image acquisition and analysis software that you can use to acquire images from National Instruments image acquisition (IMAQ) boards, display them in your program, perform interactive viewer operations, and analyze the images to extract information.
Immediate window	Visual Basic debugging tool. The Immediate window opens during runtime in break mode, which means that you can examine and debug your program while it is running. For example, you can type or paste a line of code and press ENTER to run it. Or you can copy and paste code from the Immediate window into the code editor.
indicator	Object for displaying data on a user interface. Compare to <i>control</i> .
installer	Software program that copies program, system, and other necessary files to computers. You can use tools such as the Microsoft Visual Studio Package & Deployment Wizard to create installers for programs you want to distribute to others.
instrument driver	Library of functions to control and use one specific physical instrument. Also a set of functions that adds specific functionality to an application.
IVI	Interchangeable Virtual Instruments. A technology involving standard programming interfaces for classes of instruments, such as oscilloscopes, DMMs, and function generators, that results in hardware-independent instrument drivers. The IVI standard programming interfaces have been defined by the IVI Foundation, an industry consortium. <i>See</i> <a href="http://www.ivifoundation.org">www.ivifoundation.org</a> .



**L**

LED	Light-Emitting Diode. An indicator that emits a light when current passes through it. For example, an LED shows if your computer or printer is turned on.
loop-driven	Describes a program that uses a main loop to keep polling the program for changes. Compare to <i>event-driven</i> .

**M**

MB	Megabytes of memory.
Measurement & Automation Explorer	National Instruments tool for configuring your National Instruments hardware and driver software; executing system diagnostics; adding new devices, interfaces, and virtual channels; and viewing devices and instruments connected to your system.
method	Function that performs a specific action on or with an object. The operation of the method often depends on the values of the object properties.

**N**

named channel	Channel configuration that specifies a DAQ device; a hardware-specific channel string; channel attributes such as input limits, input mode, and actuator type; and a scaling formula for making a measurement or generating a signal in terms of your actual physical quantity. You can create named channels for National Instruments devices in Measurement & Automation Explorer.
NI-DAQ	Driver-level software to control and communicate with DAQ hardware.

## O

object	Reusable, self-contained programming structure that encapsulates data and functionality. An object has exposed properties, methods, and events so that you can programmatically control how the object looks and behaves. Also known as a software object. <i>See</i> <a href="#">property</a> , <a href="#">method</a> , and <a href="#">event</a> .
Object Browser	Visual Basic tool that displays the available properties, methods, and events for the controls that are currently loaded in the development environment. The Object Browser shows the hierarchy within a group of objects. Press <F2> in Visual Basic to open the Object Browser.
OCX	OLE Control eXtension. Another name for ActiveX controls, reflected by the .ocx file extension of ActiveX control files.
OLE	Object Linking and Embedding. <i>See</i> <a href="#">ActiveX</a> .
OLE control	<i>See</i> <a href="#">ActiveX control</a> .
OPC	OLE for Process Control. An industry standard based on ActiveX and COM technologies that enables you to create a single client application that can communicate with disparate devices. <i>See</i> <a href="http://www.opcfoundation.org">www.opcfoundation.org</a> .
OPC Server	OLE for Process Control Server. A COM-based standard defined by the OPC Foundation that specifies how to interact with device servers.
oscilloscope	Measurement instrument widely used in high-speed testing applications, such as telecommunication physical layer testing, video testing, and high-speed digital design verification.

## P

parameter	Value passed to a method or function.
PID	Proportional-Integral-Derivative. A three-term control mechanism combining proportional, integral, and derivative control. You might use a PID algorithm to control processes such as heating and cooling systems, fluid level monitoring, flow control, and pressure control.
plot	<ol style="list-style-type: none"> <li>Trace (data line) on a graph representing the data in one row or column of an array.</li> <li>To display a new set of data while deleting any previous data on the graph. Use one of the <code>Plot</code> methods on the <code>CWGraph</code> control to plot data.</li> </ol>

pointer	Indicator on a CWSlide or CWKnob object. You can use a collection of pointers to display different values on the same object. In the collection, each pointer is referenced by an index in the collection and each individual pointer has its own properties such as color, style, mode, and so on.
property	Attribute that defines the appearance or state of an object. The property can be a specific value or another object with its own properties and methods. For example, a value property is the color (property) of a plot (object), while an object property is a specific Y axis (property) on a graph (object). The Y axis itself is another object with properties, such as minimum and maximum values.
property pages	Window or dialog box that displays current configuration information and allows users to modify the configuration. Also called <i>property sheets</i> .

## R

return value	Status code that indicates whether an operation completed successfully. If the return value is something other than zero, a warning or error occurred. Positive return values indicate a warning, a problem that occurred in the operation but that will not stop the program from running. Negative return values indicate an error, a critical problem that occurred in the operation and that will stop all other functions or methods that depend on the failed operation from completing successfully.
--------------	-------------------------------------------------------------------------------------------------------------------------------------------------------------------------------------------------------------------------------------------------------------------------------------------------------------------------------------------------------------------------------------------------------------------------------------------------------------------------------------------------------------

## S

scope	See <a href="#">oscilloscope</a> .
serial	Standard serial bus on a computer used to communicate with instruments. Also known as RS-232.
software object	See <a href="#">object</a> .
synchronous	Property or operation that begins and returns control to the program only when the operation is complete.
syntax	Set of rules to which statements must conform in a particular programming language.

## U

UI User Interface. *See* [GUI](#).

## V

value pairs Paired name and value that you can use for custom ticks, labels, and grid lines on the axis of a knob, slide, or graph.

Variant Data type that can hold any defined type of data. Visual Basic converts all data as needed to save it in a variable of type Variant.

VISA Driver-software architecture developed by National Instruments to unify instrumentation software for serial, GPIB, and VXI instruments or controllers. It has been accepted as a standard for VXI by the *VXIplug&play* Systems Alliance.

VXI VME eXtension for Instrumentation. Instrumentation architecture and bus based on the VME standard. Used in high-end test applications.

## W

warning Non-critical problem in a software application.

warning event Object-generated response to a warning. The ComponentWorks DAQ and IMAQ I/O controls generate warning events for which you can define event procedures. *See also* [error event](#).

watch window Visual Basic debugging tool that displays the value of variables during program execution.

# Index

---

## Symbols

\_ (line continuation character), 2-11

## A

acquiring analog data, 3-9 to 3-13

ActiveX control containers, 2-12

ActiveX controls, 2-1 to 2-13

- benefits of using, 2-12 to 2-13

- custom controls, 2-12, 3-3, 3-5

- events, 2-10 to 2-12

- loading in Visual Basic, 3-2 to 3-3

- methods, 2-8 to 2-10

- naming, 3-5

- native (Visual Basic) controls, 3-3, 3-5

- overview, 2-1 to 2-3

- placing on a form, 3-4, 3-5

- properties, 2-4 to 2-8

Analog Input (CWA) control, 3-9 to 3-13

Analysis controls, 1-2, 3-7 to 3-8

analyzing data, 3-7 to 3-8

application notes, *viii*

Automation Symbols controls, 1-3

## B

breakpoints, 3-17 to 3-18

building a distributable package, 3-19

## C

calling methods, 2-8 to 2-9, 3-7

code completion, 3-6

code examples

- AcquiredData event, 3-11, 3-12

- adding an object to a collection, 2-9

- calling Analysis functions, 3-8

- calling methods, 2-8, 2-9

- charting data, 3-12

- Click event, 3-6, 3-8, 3-9, 3-11, 3-13, 3-14

- configuring devices, 3-11, 3-13, 3-14

- Debug.Print, 3-16

- displaying error information, 3-14

- displaying messages, 3-13, 3-14

- displaying values on the user

  - interface, 2-8, 3-8

- Err object, 3-13, 3-14

- using event parameters in procedures, 2-11

- For loop, 3-6, 3-11

- generating event procedure skeletons, 2-11

- generating random data, 3-6

- GetErrorText method, 3-14

- getting a property, 2-7

- If-Then statements, 3-13, 3-14

- Item method, 2-10

- On Error statement, 3-13, 3-14

- plotting data, 3-6

- printing values, 2-8, 3-16

- removing objects from a collection, 2-9

- using return values, 3-15

- saving a value from a method call, 2-8

- scaling data with user interface controls, 3-9

- setting a property, 2-7

- setting properties on collection items, 2-10

- starting acquisitions, 3-11, 3-13, 3-14

collections, 2-3, 2-9 to 2-10

ComponentWorks

- application notes, *viii*

- controls, 1-2 to 1-3

- error handling, 3-13 to 3-16

- examples, *viii*, *ix*

- installation, 1-4 to 1-5

- overview, 1-1 to 1-3

- packages, 1-1

- property pages, 2-5
- reference, *ix*
- samples, *viii*, *ix*
- system requirements, 1-3
- template for Visual Basic, 3-1 to 3-3
- tutorial, 3-1 to 3-20

control properties, 2-4

customizing a program title bar, 3-18

## D

Data Acquisition controls, 1-2, 3-9 to 3-13

data logging, 3-20

DataSocket control, 1-2, 3-20

debugging, 3-16 to 3-18

- breakpoints, 3-17 to 3-18
- Immediate window, 3-17
- Print function, 3-16
- stepping through code, 3-17
- watch window, 3-17

distributing programs, 3-19

DMM control, 1-2

documentation

- conventions, *x*
- getting started with, *vii* to *ix*
- related documentation, *vii* to *ix*

## E

environment properties, 2-4

error events, 3-16

error handling, 3-13 to 3-16

- events, 3-16
- GetErrorText method, 3-14, 3-15
- On Error statement, 3-13 to 3-14
- return values, 3-15

ErrorEventMask property, 3-16

event procedures, 2-10, 2-11

event-driven programming, 2-11

events, 2-10 to 2-12

- developing event procedures, 2-11, 3-6, 3-11
- error, 3-16
- warning, 3-16

examples, *viii*, *ix*

- using ComponentWorks in Visual Basic (tutorial), 3-1 to 3-20

*See also* code examples.

ExceptionOnError property, 3-15

exceptions, 3-13

executable, 3-19

## F

Form Layout window, 3-18

forms, 3-4, 3-18

## G

GetErrorText method, 3-15

getting started, *vii* to *ix*

GPIB control, 1-2, 3-9

Graph (CWGraph), 1-2, 3-4 to 3-6

graphing data, 3-4 to 3-6

## H

Hungarian notation, 3-5

## I

IMAQ Vision controls, 1-3

Immediate window, 3-17

installers, 3-19

installing ComponentWorks, 1-4 to 1-5

Instrument controls, 1-2, 3-9

interacting with data, 3-8 to 3-9

Internet connectivity, 1-2, 3-20

Item method, 2-9 to 2-10

IVI controls, 1-2

**K**

Knob (CWKnob), 3-8 to 3-9

**L**

line continuation, 2-11  
loading controls, 3-2 to 3-3  
loop-driven program, 2-11

**M**

making an executable, 3-19  
manipulating data, 3-8 to 3-9  
manual. *See* documentation.  
Measurement Studio, 1-1  
methods, 2-8 to 2-10  
    calling, 2-8 to 2-9, 3-7  
    default method, 2-10  
    GetErrorText, 3-15  
    passing parameters, 2-8 to 2-9

**N**

naming conventions, 3-5  
National Instruments Web support, A-1

**O**

objects, 2-1 to 2-3  
online problem-solving and diagnostic  
    resources, A-1

**P**

Package & Deployment Wizard, 3-19  
parameters, 2-8 to 2-9  
PID control, 1-3  
placing controls, 3-4, 3-5  
Print function, 3-16

program distribution, 3-18 to 3-19  
    building a distributable package, 3-19  
    making an executable, 3-19  
programming  
    event-driven, 2-11  
    loop-driven, 2-11  
project template, 3-1 to 3-3  
properties, 2-4 to 2-8  
    control, 2-4, 3-9  
    default property, 2-7  
    environment, 2-4, 3-5, 3-7  
    ErrorEventMask, 3-16  
    ExceptionOnError, 3-15  
    property pages, 2-5 to 2-6  
    setting programmatically, 2-6 to 2-8  
Properties window, 2-6, 3-5  
property pages, 2-5 to 2-6

**R**

redistributable files, 3-19  
requirements (system), 1-3  
return values, 3-15  
run to cursor, 3-17

**S**

scaling data with user interface controls, 3-11  
Scope control, 1-2  
Serial control, 1-2, 3-9  
single stepping, 3-17  
software objects, 2-1 to 2-3  
software-related resources, A-2  
Statistics (CWStat), 3-7 to 3-8  
stepping (through code), 3-17  
system requirements, 1-3

## T

- technical support resources, A-1
- telephone support, A-2
- template (Visual Basic project), 3-1 to 3-3
- testing, 3-16 to 3-18
- Three-Dimensional Graph control, 1-2
- title bar, 3-18
- tutorial, 3-1 to 3-20
  - acquiring analog data, 3-9 to 3-13
  - analyzing data, 3-7 to 3-8
  - charting data, 3-12 to 3-13
  - distributing programs, 3-18 to 3-19
  - error handling, 3-13 to 3-16
  - expanding your program, 3-20
  - interacting with data, 3-8 to 3-9
  - testing and debugging, 3-16 to 3-18
  - visualizing data, 3-4 to 3-6

## U

- User Interface controls, 1-2, 3-4 to 3-6, 3-8 to 3-9

## V

- VISA control, 1-2, 3-9
- Visual Basic, 3-1 to 3-20
  - breakpoints, 3-17 to 3-18
  - code completion, 3-6
  - code editor, 2-12

- debugging, 3-16 to 3-18
- error handling, 3-13 to 3-16
- forms, 3-4, 3-18
- Immediate window, 3-17
- line continuation, 2-11
- loading controls, 3-2 to 3-3
- On Error statement, 3-13 to 3-14
- Package & Deployment Wizard, 3-19
- Print function, 3-16
- Properties window, 2-6, 3-5
- stepping through code, 3-17
- template, 3-1 to 3-3
- Toolbox, 3-3
- tutorial, 3-1 to 3-20
- watch window, 3-17
- visualizing data, 3-4 to 3-6, 3-12 to 3-13

## W

- warning events, 3-16
- watch window, 3-17
- Web support from National Instruments
  - online problem-solving and diagnostic resources, A-1
  - software-related resources, A-2
- worldwide technical support, A-2