

COMPREHENSIVE SERVICES

We offer competitive repair and calibration services, as well as easily accessible documentation and free downloadable resources.

SELL YOUR SURPLUS

We buy new, used, decommissioned, and surplus parts from every NI series. We work out the best solution to suit your individual needs.

 Sell For Cash  Get Credit  Receive a Trade-In Deal

OBSOLETE NI HARDWARE IN STOCK & READY TO SHIP

We stock **New**, **New Surplus**, **Refurbished**, and **Reconditioned** NI Hardware.



Bridging the gap between the manufacturer and your legacy test system.

 1-800-915-6216

 www.apexwaves.com

 sales@apexwaves.com

All trademarks, brands, and brand names are the property of their respective owners.

Request a Quote

 **CLICK HERE**

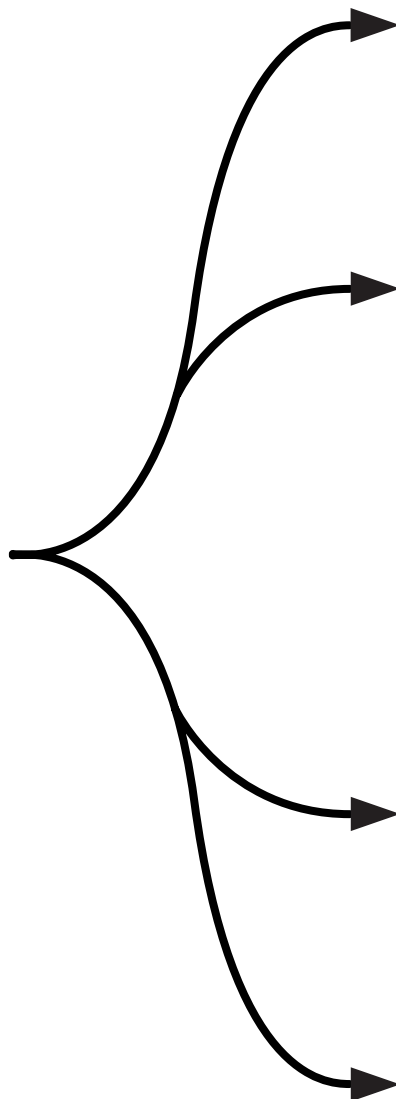
PCI-8212

GETTING STARTED

PCI/PXI-8212 for Windows

**Please turn
to the correct
section for your
operating system**

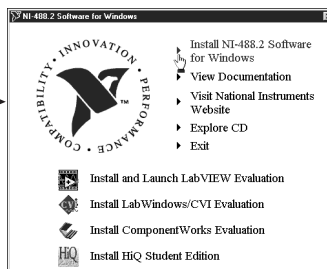
**No CD-ROM drive?
Please see back cover for
alternative installation options.**



PCI/PXI-8212 for Windows 95

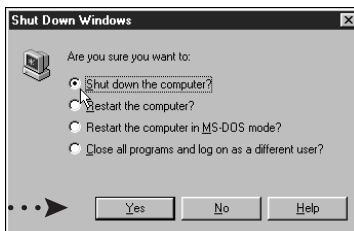
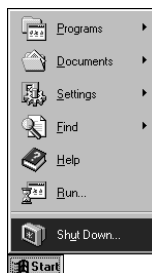
1

Insert the NI-488.2 CD, then choose Install NI-488.2 Software for Windows.



2

Shut down, then power off computer.



Power Off
Computer

3

Install hardware and cables, then power on computer.



PCI



PXI

4

Install the PCI-PCI Bridge Driver.

Windows automatically detects the new hardware.

Follow the prompts in the Wizard. Select the recommended options when given a choice. If Windows asks where to search for a new driver, clear all checkboxes and click **Next**.

5

Install the Windows 95 Ethernet Driver.

Windows automatically detects a new card.

On older versions of Windows 95, a dialog box appears with three choices.

- Insert the PCI/PXI Ethernet Adapters CD.
- Choose **Driver from disk provided by hardware manufacturer** and click **OK**.
- In the next dialog box, enter the location of the PCI/PXI Ethernet Adapters CD and click **OK**.

On newer versions of Windows 95, a dialog box appears with **Back**, **Next**, and **Cancel** buttons.

- Insert the PCI/PXI Ethernet Adapters CD.
- Follow the prompts in the Wizard.

Tip: If you are using a PXI-8170 controller, you can load the Ethernet driver from c:\images\ethernet.

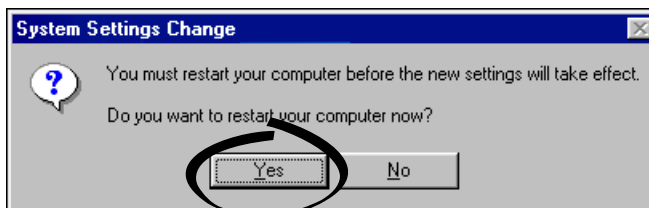
Tip: If Windows reports that it cannot locate a file on the **Intel PRO Adapter CD-ROM**, insert the PCI/PXI Ethernet Adapters CD and let Windows copy the files from the top directory of the CD-ROM (typically d:\).

Tip: If Windows reports that it cannot locate a file on the **Windows 95 CD-ROM**, insert the Windows 95 Installation CD and let Windows copy the files from either the top directory or the win95 directory of the CD-ROM (typically d:\ or d:\win95\).

For Help installing your driver, refer to the *PCI/PXI Ethernet Adapters Installation Guide* (available on the PCI/PXI Ethernet Adapters CD). The installation guide also contains cabling instructions and troubleshooting tips.

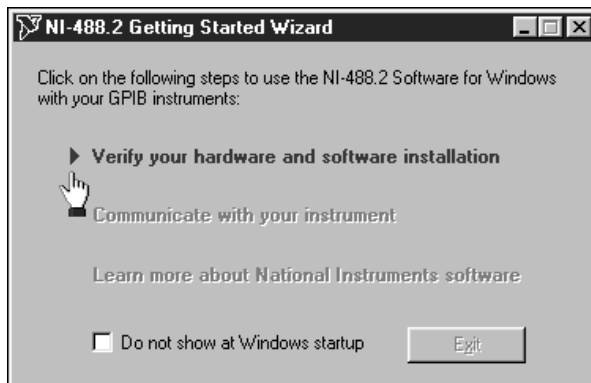
6

Restart computer, then connect to your network.





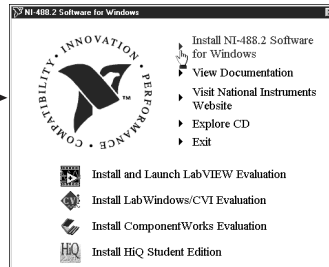
Run NI-488.2 Getting Started Wizard.



PCI/PXI-8212 for Windows Me/98

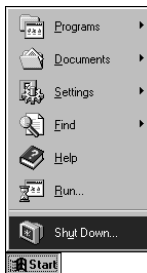
1

Insert the NI-488.2 CD, then choose Install NI-488.2 Software for Windows.



2

Shut down, then power off computer.



Power Off
Computer

3

Install hardware and cables, then power on computer.



PCI



PXI

4

Install the PCI-PCI Bridge Driver.

Windows automatically detects the new hardware.

Follow the prompts in the Wizard. Select the recommended options when given a choice. If Windows asks where to search for a new driver, clear all checkboxes and click **Next**.

5

Install the Windows Me/98 Ethernet Driver.

In most cases, Windows automatically detects the new hardware and installs the appropriate driver.

If Windows displays an **Add New Hardware Wizard** dialog box, insert the PCI/PXI Ethernet Adapters CD and follow the prompts. Choose the recommended options when given a choice. If Windows asks where to search for a new driver, make sure the box next to **CD-ROM Drive** is checked, and click **Next**.

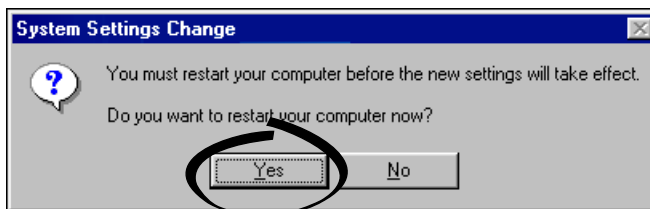
Tip: If Windows reports that it cannot locate a file on the **Intel PRO Adapter CD-ROM**, insert the PCI/PXI Ethernet Adapters CD and let Windows copy the files from the top directory of the CD-ROM (typically d:\).

Tip: If Windows reports that it cannot locate a file on the **Windows CD-ROM**, insert the Windows installation CD and let Windows copy the files from either the top directory or the win9x directory of the CD-ROM (typically d:\ or d:\win9x\).

For Help installing your driver, refer to the *PCI/PXI Ethernet Adapters Installation Guide* (available on the PCI/PXI Ethernet Adapters CD). The installation guide also contains cabling instructions and troubleshooting tips.

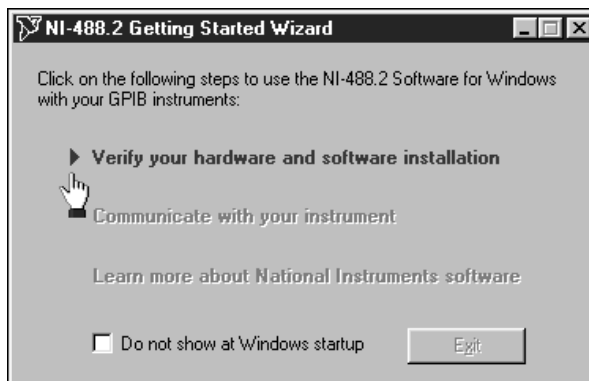
6

Restart computer, then connect to your network.



7

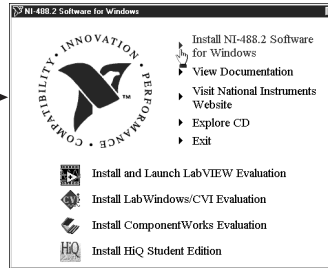
Run NI-488.2 Getting Started Wizard.



PCI/PXI-8212 for Windows 2000/XP

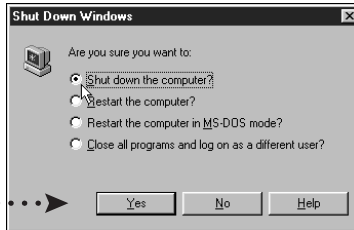
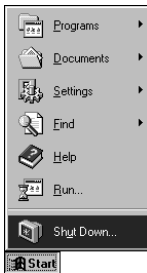
1

Insert the NI-488.2 CD, then choose Install NI-488.2 Software for Windows.



2

Shut down, then power off computer.



Power Off Computer



Power Off Computer

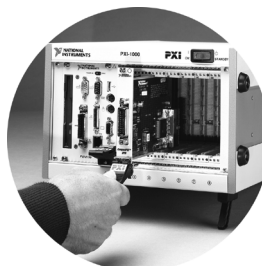
Windows 2000/XP

3

Install hardware and cables, then power on computer.



PCI



PXI

4

Install software for PCI-GPIB. (Windows XP only)



Verify the **Install the Software Automatically** option is selected and click **Next**.



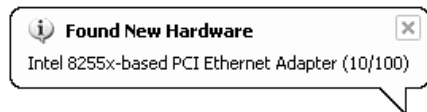
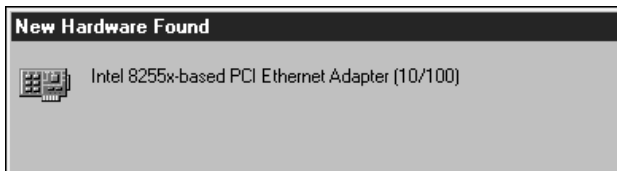
Click **Finish** option to complete the installation.

5

Install the Windows 2000/XP Ethernet Drivers.

Windows 2000/XP automatically finds the new card and installs the drivers. You also may be prompted for the original Windows 2000/XP CD.

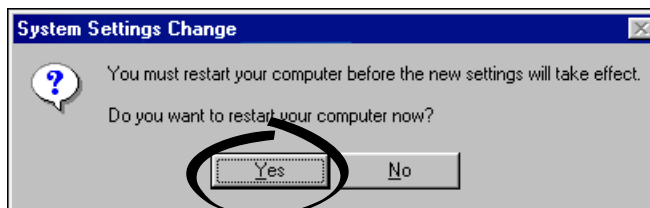
For Help installing your driver, refer to the *PCI/PXI Ethernet Adapters Installation Guide* (available on the PCI/PXI Ethernet Adapters CD). The installation guide also contains cabling instructions and troubleshooting tips.



Tip: If Windows XP displays an **Add New Hardware Wizard** dialog box, follow the prompts. Choose the **recommended** options when given a choice.

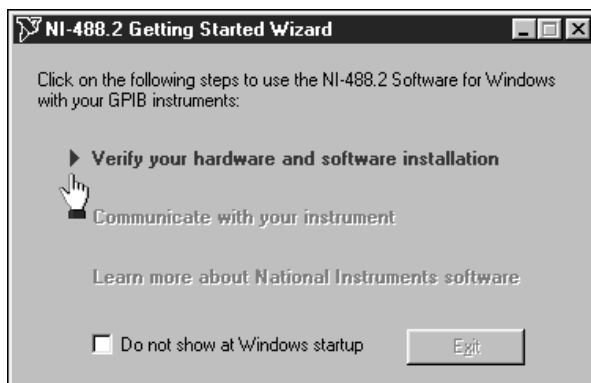
6

Restart computer, then connect to your network. (Windows 2000 only)





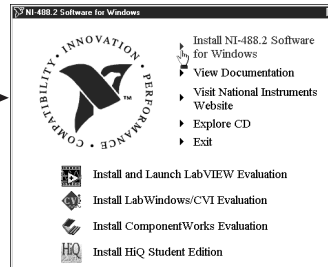
Run NI-488.2 Getting Started Wizard.



PCI/PXI-8212 for Windows NT 4.0

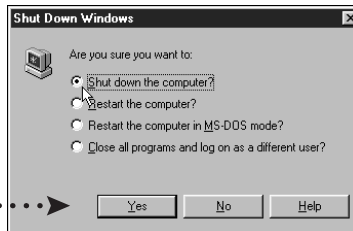
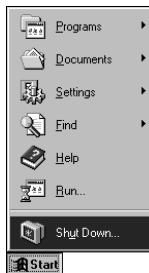
1

Insert the NI-488.2 CD, then choose Install NI-488.2 Software for Windows.



2

Shut down, then power off computer.



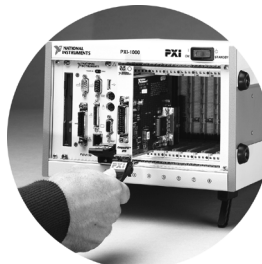
Power Off Computer

3

Install hardware and cables, then power on computer.



PCI



PXI

4

Install the PCI-PCI Bridge Driver.

Windows automatically detects the new hardware.

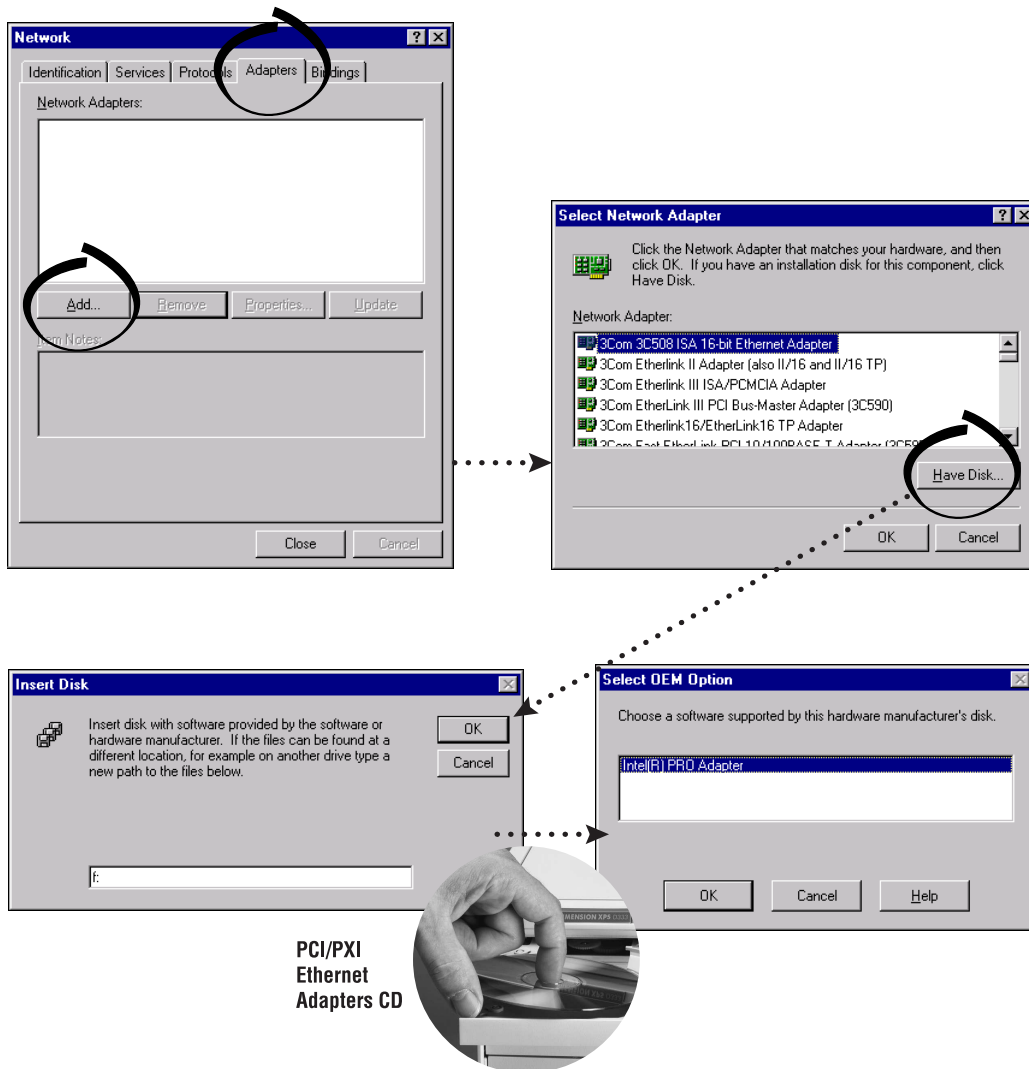
Follow the prompts in the Wizard. Select the recommended options when given a choice. If Windows asks where to search for a new driver, clear all checkboxes and click **Next**.

5

Install the Windows NT 4.0 Ethernet Driver.

Select **Start»Settings»Control Panel»Network»Adapters** and click **Add**. Click **Have Disk** and insert the PCI/PXI Ethernet Adapters CD when prompted. You also may be prompted for the original Windows NT CD.

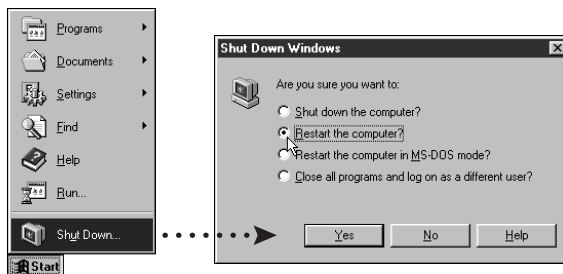
For Help installing your driver, refer to the *PCI/PXI Ethernet Adapters Installation Guide* (available on the PCI/PXI Ethernet Adapters CD). The installation guide also contains cabling instructions and troubleshooting tips.



Tip: If you are using a PXI-8170 controller, you can load the Ethernet driver from `C:\images\ethernet`.

6

Restart computer, then connect to your network.



7

Run NI-488.2 Getting Started Wizard.



Alternative Driver Installation Options for the PCI/PXI-8212

The installation instructions illustrated for each operating system in this document are appropriate for most users. However, if your system does not contain a CD-ROM drive, try one of the following alternatives to load the GPIB and Ethernet drivers.

- If your system is not equipped with a CD-ROM drive, connect an external CD-ROM, such as a USB CD-ROM, and load the GPIB and Ethernet drivers directly from their respective CDs.
- Install the Ethernet driver first, and then download the GPIB driver from the National Instruments web site.
 1. Install the PCI/PXI-8212 in your computer.
 2. At startup, cancel the **Add New Hardware Wizard** that displays it has found a *PCI Communication Device*.
 3. Install the Ethernet driver using any of the other options on this page, as appropriate.
 4. Use the Ethernet connection to download the GPIB driver from the National Instruments web site. Access the **Drivers and Downloads** page at ni.com/download/.
- If your system contains a National Instruments PXI-8170 controller, the Ethernet driver is already loaded on the hard drive. When the installer prompts you for the location of the driver, you can select `c:\images\ethernet` instead of the CD-ROM. In fact, you may choose this option even if you do have an internal or external CD-ROM.
- If you have an existing Ethernet connection in your computer, download the Intel Ethernet driver from the National Instruments web site. Access the **Drivers and Downloads** page at ni.com/download/.
- Use another computer that has a CD-ROM to copy the Ethernet driver onto a 3.5 in. floppy disk.
 1. Open a DOS command window.
 2. Change to the \MAKEDISK directory on the CD-ROM.
 3. Type: `MAKEDISK [operating system] [destination (optional; A: if not specified)]` where `[operating system]` is the OS family you want to use with the diskette.
 - W2K = Microsoft Windows 2000/XP
 - NT = Microsoft Windows NT
 - W9X = Microsoft Windows Me/98/95
 - NW = Novell NetWare servers and clients
 - DOS = Microsoft DOS and IBM OS/2



ni.com/support
ni.com/ask

