

## COMPREHENSIVE SERVICES

We offer competitive repair and calibration services, as well as easily accessible documentation and free downloadable resources.

## SELL YOUR SURPLUS

We buy new, used, decommissioned, and surplus parts from every NI series. We work out the best solution to suit your individual needs.

 Sell For Cash    Get Credit    Receive a Trade-In Deal

## OBSOLETE NI HARDWARE IN STOCK & READY TO SHIP

We stock **New, New Surplus, Refurbished, and Reconditioned** NI Hardware.



*Bridging the gap between the manufacturer and your legacy test system.*

 1-800-915-6216

 [www.apexwaves.com](http://www.apexwaves.com)

 [sales@apexwaves.com](mailto:sales@apexwaves.com)

*All trademarks, brands, and brand names are the property of their respective owners.*

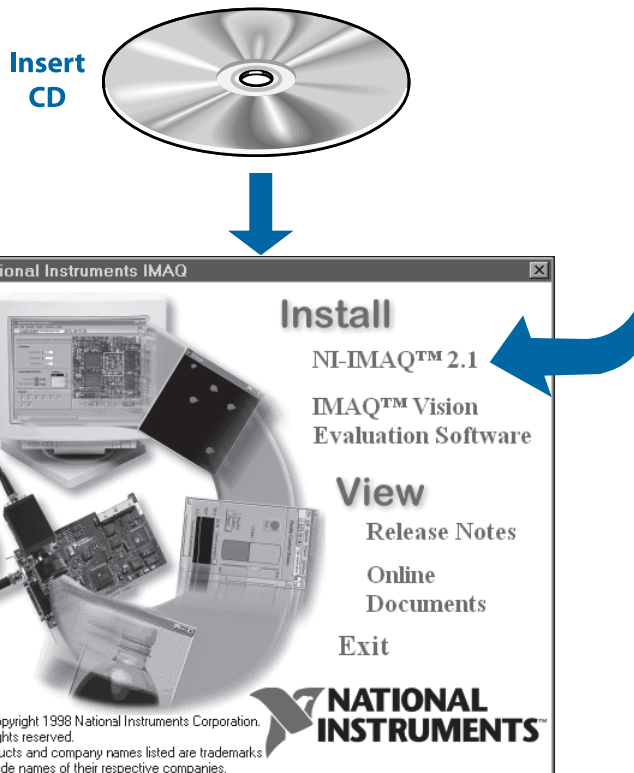
**Request a Quote**

 **CLICK HERE**

**PCI-1407**

# Set up and Test the PCI/PXI-1407

## 1 Install Your Software



**Need more information?**  
See the *IMAQ PCI/PXI-1407 User Manual*.

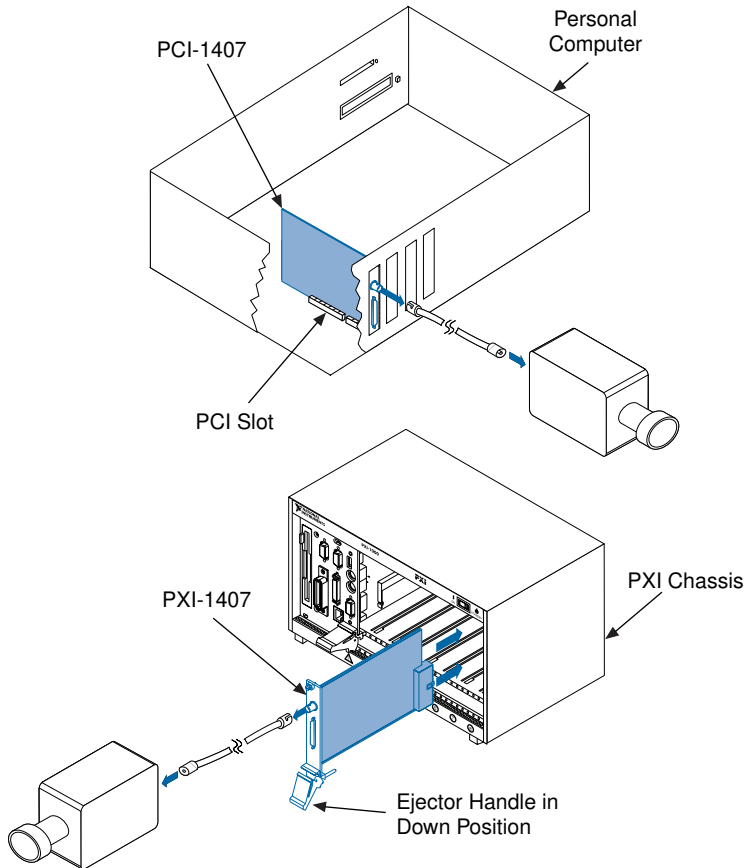
# 2

## Install Your PCI/PXI-1407 and Connect Your Camera



**Caution**

**Turn the power off before installing your hardware.**



**Note**

**Follow the instructions in your computer documentation to install the PCI/PXI-1407 device.**

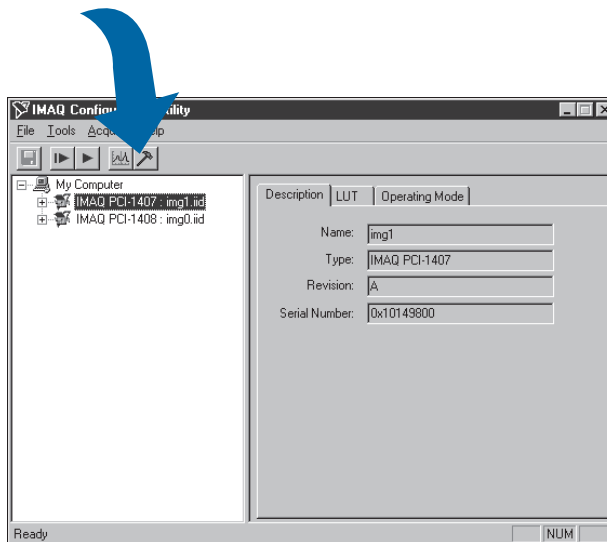
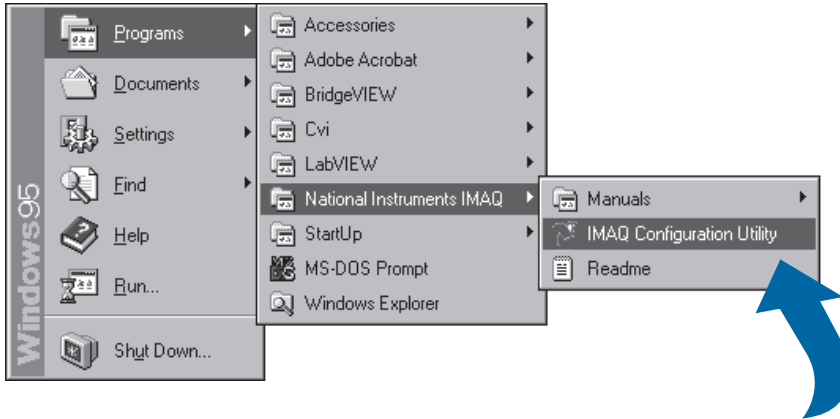


**Need more information?**

**See the *IMAQ PCI/PXI-1407 User Manual*.**

# 3

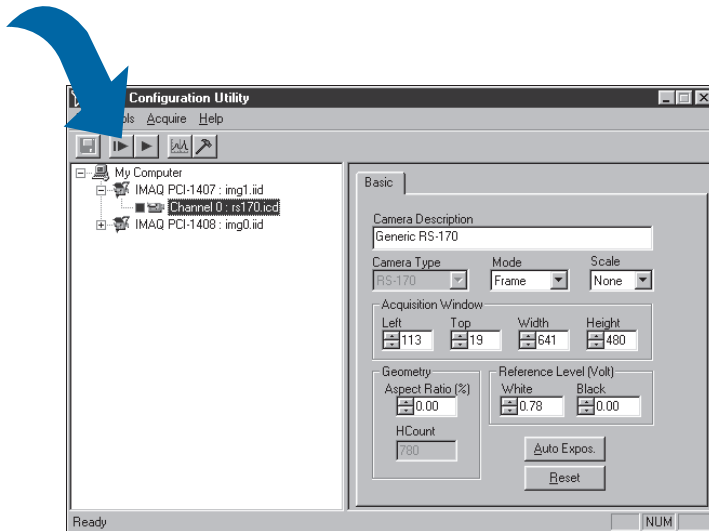
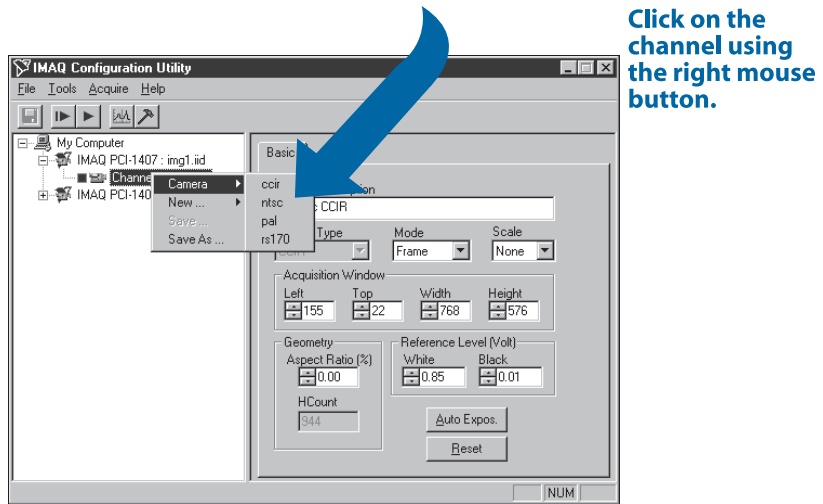
## Run the IMAQ Configuration Utility and the IMAQ Diagnostics



**Need more information?**  
See the IMAQ Configuration Utility online help.

# 4

## Select the Camera File and Acquire an Image



**Need more information?**  
See the IMAQ Configuration Utility online help.

BridgeVIEW™, CVI™, IMAQ™, LabVIEW™, NI-DAQ™, NI-IMAQ™, and StillColor™ are trademarks of National Instruments Corporation. Product and company names are trademarks or trade names of their respective companies.

© Copyright 1998 National Instruments Corporation. All rights reserved.



322159A-01

Dec98