

## COMPREHENSIVE SERVICES

We offer competitive repair and calibration services, as well as easily accessible documentation and free downloadable resources.

## SELL YOUR SURPLUS

We buy new, used, decommissioned, and surplus parts from every NI series. We work out the best solution to suit your individual needs.

 Sell For Cash    Get Credit    Receive a Trade-In Deal

## OBSOLETE NI HARDWARE IN STOCK & READY TO SHIP

We stock **New**, **New Surplus**, **Refurbished**, and **Reconditioned** NI Hardware.



*Bridging the gap between the manufacturer and your legacy test system.*

 1-800-915-6216

 [www.apexwaves.com](http://www.apexwaves.com)

 [sales@apexwaves.com](mailto:sales@apexwaves.com)

*All trademarks, brands, and brand names are the property of their respective owners.*

**Request a Quote**

 **CLICK HERE**

**PCI-6541**

# NI PXI/PCI-6541/6542 Specifications

## 50/100 MHz Digital Waveform Generator/Analyzer

このドキュメントには、日本語ページも含まれています。

This document provides the specifications for the NI PXI/PCI-6541 (NI 6541) and the NI PXI/PCI-6542 (NI 6542).

Typical values are representative of an average unit operating at room temperature. Specifications are subject to change without notice. For the most recent NI 6541/6542 specifications, visit [ni.com/manuals](http://ni.com/manuals).

To access the NI 6541/6542 documentation, including the *NI Digital Waveform Generator/Analyzer Getting Started Guide*, which contains functional descriptions of the NI 6541/6542 signals, navigate to **Start» Programs» National Instruments» NI-HSDIO» Documentation**.



**Hot Surface** If the NI 6541/6542 has been in use, it may exceed safe handling temperatures and cause burns. Allow time to cool before removing the NI 6541/6542 from the chassis.



**Note** All values were obtained using a 1 m cable (SHC68-C68-D4 recommended). Performance specifications are not guaranteed when using longer cables. Values are typical unless otherwise noted.

## Contents

---

Channel Specifications.....	2
Generation Channels (Data, DDC CLK OUT, and PFI <0..3>).....	2
Acquisition Channels (Data, STROBE, and PFI <0..3>) .....	4
Timing Specifications .....	5
Sample Clock .....	5
Generation Timing (Data, DDC CLK OUT, and PFI <0..3> Channels) .....	7
Generation Provided Setup and Hold Times .....	8

Acquisition Timing (Data, STROBE, and PFI <0..3> Channels) ....	11
CLK IN (SMB Jack Connector) .....	14
STROBE (DDC Connector) .....	15
PXI_STAR (PXI Backplane) .....	16
CLK OUT (SMB Jack Connector) .....	16
DDC CLK OUT (DDC Connector).....	17
Reference Clock (PLL).....	17
Waveform Specifications .....	18
Memory and Scripting .....	18
Triggers (Inputs to the NI 6541/6542) .....	20
Events (Generated from the NI 6541/6542).....	22
Miscellaneous .....	22
Power .....	23
Physical Specifications .....	23
Software.....	24
Environment .....	24
Safety, Electromagnetic Compatibility, and CE Compliance .....	25

## Channel Specifications

---

Specification	Value	Comments
Number of data channels	32	—
Direction control of data channels	Per channel	—
Number of programmable function interface (PFI) channels	4	Refer to the <a href="#">Waveform Specifications</a> section for more details.
Direction control of PFI channels	Per channel	—
Number of clock terminals	3 input 2 output	Refer to the <a href="#">Timing Specifications</a> section for more details.

## Generation Channels (Data, DDC CLK OUT, and PFI <0..3>)

Specification	Value				Comments
Generation voltage families	1.8V, 2.5V, 3.3V TTL (5V TTL compatible)				Into 1 M $\Omega$
Generation signal type	Single-ended				—
Generation voltage levels	<b>Voltage Low Levels</b>		<b>Voltage High Levels</b>		—
	<b>Typical</b>	<b>Maximum</b>	<b>Minimum</b>	<b>Typical</b>	
1.8V	0 V	0.1 V	1.7 V	1.8 V	I = 100 $\mu$ A
2.5V	0 V	0.1 V	2.4 V	2.5 V	
3.3V	0 V	0.1 V	3.2 V	3.3 V	
5.0V	0 V	0.1 V	3.2 V	3.3 V	
Output impedance	50 $\Omega$ nominal				—
Maximum DC drive strength	$\pm$ 8 mA at 1.8 V $\pm$ 16 mA at 2.5 V $\pm$ 32 mA at 3.3 V				—
Data channel driver enable/disable control	Per channel				Software-selectable
Channel power-on state	<b>Module Assemblies Labeled A and B</b>		<b>Module Assemblies Labeled C and Later</b>		—
	Drivers disabled, 10 k $\Omega$ input impedance		Drivers disabled, 50 k $\Omega$ input impedance		
Output protection	The device can indefinitely sustain a short to any voltage between 0 V and 5 V.				—

## Acquisition Channels (Data, STROBE, and PFI <0..3>)

Specification	Value		Comments
Acquisition voltage families	1.8V, 2.5V, 3.3V TTL (5V TTL compatible)		—
Acquisition signal type	Single-ended		—
Acquisition voltage levels	<b>Low Voltage Threshold</b>	<b>High Voltage Threshold</b>	—
	<b>Maximum</b>	<b>Minimum</b>	
1.8V	0.45 V	1.35 V	—
2.5V	0.75 V	1.75 V	—
3.3V	1.00 V	2.30 V	—
5.0V	1.00 V	2.30 V	—
Input impedance	<b>Module Assemblies Labeled A and B</b>	<b>Module Assemblies Labeled C and Later</b>	—
	10 k $\Omega$	50 k $\Omega$	
Input protection	-1 to 6 V		Diode clamps in the design may provide additional protection outside this range.

# Timing Specifications

## Sample Clock

Specification	Value	Comments
Sample clock sources	<ol style="list-style-type: none"> <li>1. On Board Clock (internal voltage-controlled crystal oscillator (VCXO) with divider)</li> <li>2. CLK IN (SMB jack connector)</li> <li>3. PXI_STAR (PXI backplane—PXI only)</li> <li>4. STROBE (Digital Data &amp; Control (DDC) connector; acquisition only)</li> </ol>	—
On Board Clock frequency range	<p><b>NI 6541:</b> 48 Hz to 50 MHz Configurable to 200 MHz/<math>N</math>; <math>4 \leq N \leq 4,194,304</math></p> <p><b>NI 6542:</b> 48 Hz to 100 MHz Configurable to 200 MHz/<math>N</math>; <math>2 \leq N \leq 4,194,304</math></p>	—
CLK IN frequency range	<p><b>NI 6541:</b> 20 kHz to 50 MHz</p> <p><b>NI 6542:</b> 20 kHz to 100 MHz</p>	Refer to the <a href="#">CLK IN (SMB Jack Connector)</a> section for restrictions based on waveform type.
PXI_STAR frequency range (PXI only)	<p><b>NI 6541:</b> 48 Hz to 50 MHz</p> <p><b>NI 6542:</b> 48 Hz to 100 MHz</p>	Refer to the <a href="#">PXI_STAR (PXI Backplane)</a> section.
STROBE frequency range	<p><b>NI 6541:</b> 48 Hz to 50 MHz</p> <p><b>NI 6542:</b> 48 Hz to 100 MHz</p>	Refer to the <a href="#">STROBE (DDC Connector)</a> section.

<b>Specification</b>	<b>Value</b>		<b>Comments</b>
Sample clock relative delay adjustment range	0.0 to 1.0 Sample clock periods		You can apply a delay or phase adjustment to the On Board Clock to align multiple devices.
Sample clock relative delay adjustment resolution	10 ps		
Exported Sample clock destinations	1. DDC CLK OUT (DDC connector) 2. CLK OUT (SMB jack connector)		Sample clocks with sources other than STROBE can be exported.
Exported Sample clock delay range ( $\delta_C$ )	0.0 to 1.0 Sample clock periods		For clock frequencies $\geq 25$ MHz
Exported Sample clock delay resolution ( $\delta_C$ )	1/256 of Sample clock period		For clock frequencies $\geq 25$ MHz
Exported Sample clock jitter	<b>Period Jitter</b>	<b>Cycle-to-Cycle Jitter</b>	Typical; using On Board Clock
	20 ps <sub>rms</sub>	35 ps <sub>rms</sub>	

## Generation Timing (Data, DDC CLK OUT, and PFI <0..3> Channels)

Specification	Value	Comments
Data channel-to-channel skew	±600 ps	Typical skew across all data channels
Maximum data channel toggle rate	<b>NI 6541:</b> 25 MHz <b>NI 6542:</b> 50 MHz	—
Data position modes	Sample clock rising edge, Sample clock falling edge, or Delay from Sample clock rising edge	—
Generation data delay range ( $\delta_G$ )	0.0 to 1.0 Sample clock periods	Supported for clock frequencies $\geq 25$ MHz
Generation data delay resolution ( $\delta_G$ )	1/256 of Sample clock period	Supported for clock frequencies $\geq 25$ MHz
Exported Sample clock offset ( $t_{CO}$ )	0.0 or 2.5 ns (default)	Software-selectable
Time delay from Sample clock (internal) to DDC connector ( $t_{SCDDC}$ )	15 ns	Typical



## Generation Provided Setup and Hold Times

Exported Sample Clock Mode and Offset	Voltage Family	Time from Rising Clock Edge to Data Transition ( $t_{PCO}$ )	Minimum Provided Setup Time ( $t_{PSU}$ )	Minimum Provided Hold Time ( $t_{PH}$ )
Noninverted, 2.5 ns	1.8V	2.5 ns, typical	$t_p - 5.5$ ns	0.5 ns
	2.5V		$t_p - 4.5$ ns	0.9 ns
	3.3V/5.0V		$t_p - 4.5$ ns	1 ns
Inverted, 0 ns	1.8V	$t_p/2$	$t_p/2 - 3.5$ ns	$(t_p/2) - 1.5$ ns
	2.5V		$t_p/2 - 2.5$ ns	
	3.3V/5.0V		$t_p/2 - 2$ ns	

To determine the appropriate exported Sample clock mode and offset for your NI 6541/6542 generation session, compare the setup and hold times from the datasheet of your device under test (DUT) to the values in this table. Select the exported Sample clock mode and offset such that the NI 6541/6542 provided setup and hold times are greater than the setup and hold times required for the DUT.

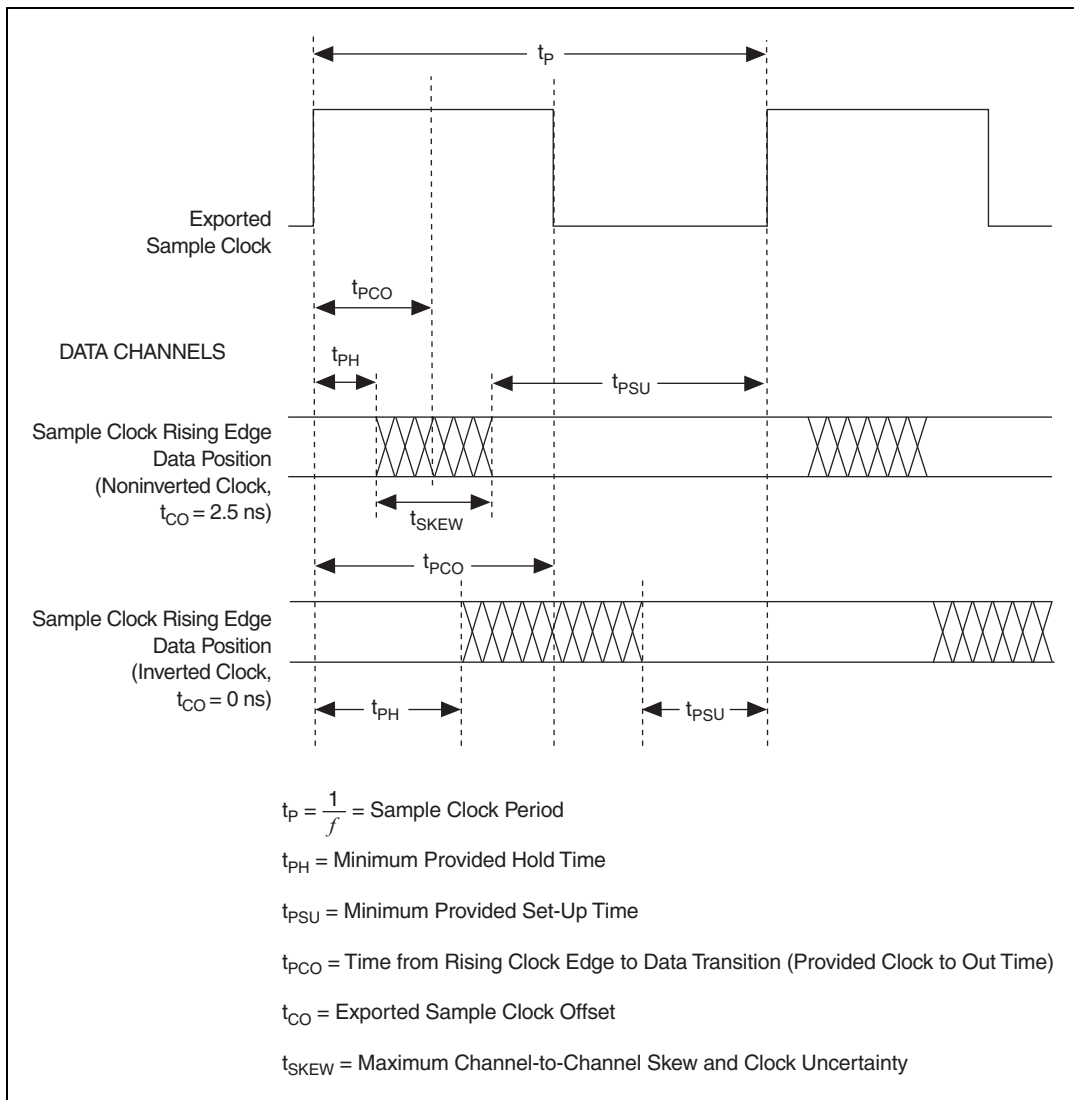
Refer to Figure 1, *Generation Provided Setup and Hold Times Timing Diagram*, for a diagram illustrating the relationship between the exported Sample clock mode and the provided setup and hold times.

**Notes:** This table assumes the data position is set to Sample clock rising edge and the Sample clock is exported to the DDC connector.

This table includes worst-case effects of channel-to-channel skew, inter-symbol interference, and jitter.

Other combinations of exported Sample clock mode and offset are also allowed. The preceding table presents only the values for the default case (noninverted clock with 2.5 ns offset) and the case for providing balanced setup and hold times (inverted clock with 0 ns offset).

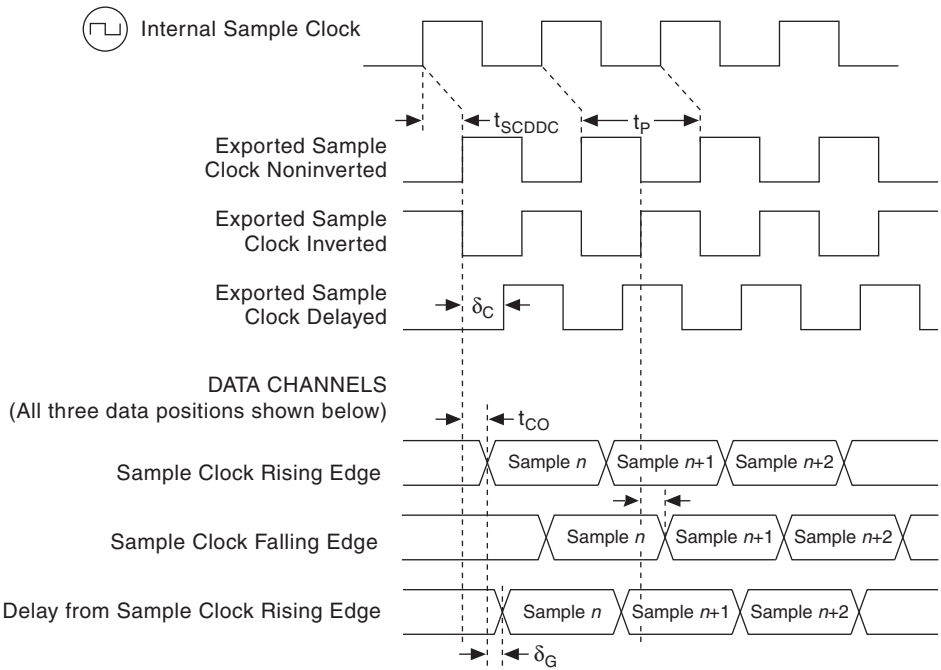
Specified timing relationships apply at the DDC connector and at high-speed DIO accessory terminals. Any signal routing, clock splitting, buffers, or translation logic can impact this relationship. If multiple copies of DDC\_CLK\_OUT are necessary, NI recommends using a zero delay buffer to preserve this relationship.



**Figure 1.** Generation Provided Setup and Hold Times Timing Diagram



**Note** Provided setup and hold times account for maximum channel-to-channel skew and jitter.



$t_{SCDDC}$  : Time Delay from Internal Sample Clock to DDC Connector Exported Sample Clock

$0 \leq \delta_C \leq 1$  : Exported Sample Clock Delay (fraction of  $t_p$ )

$0 \leq \delta_G \leq 1$  : Generation Data Delay (fraction of  $t_p$ )

$t_p = \frac{1}{f}$  = Sample Clock Period

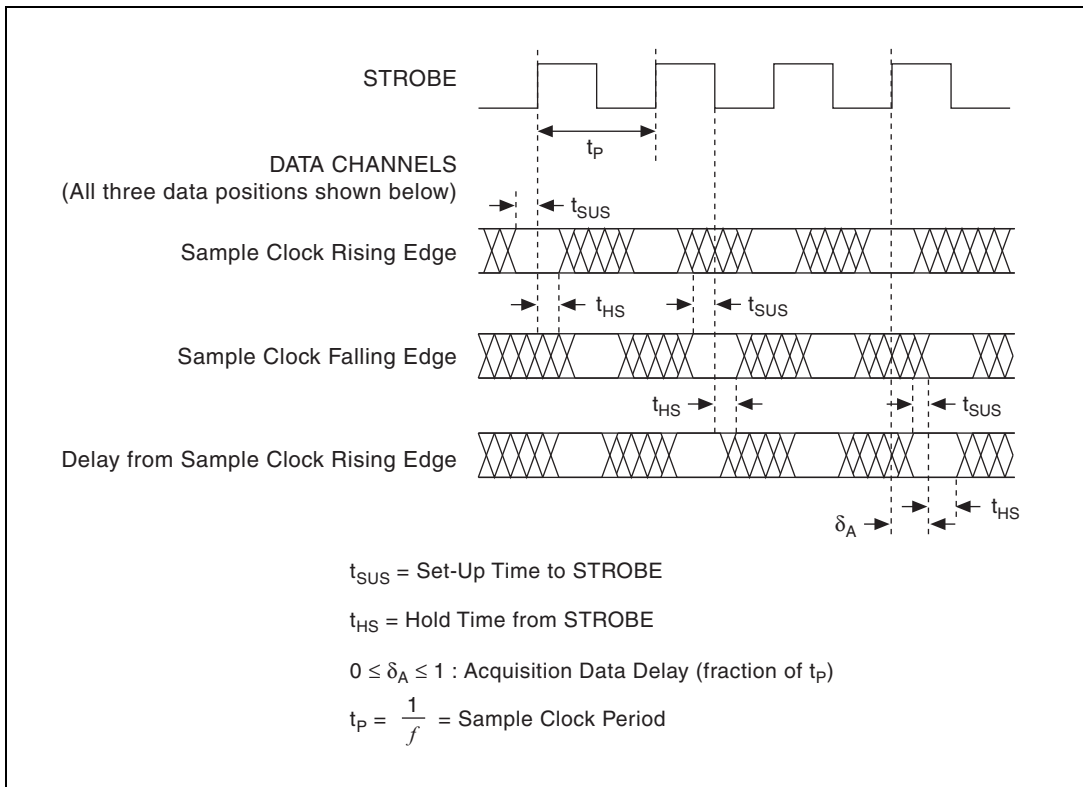
$t_{CO}$  = Exported Sample Clock Offset; 0 or 2.5 ns, software-selectable

**Figure 2.** Generation Timing Diagram

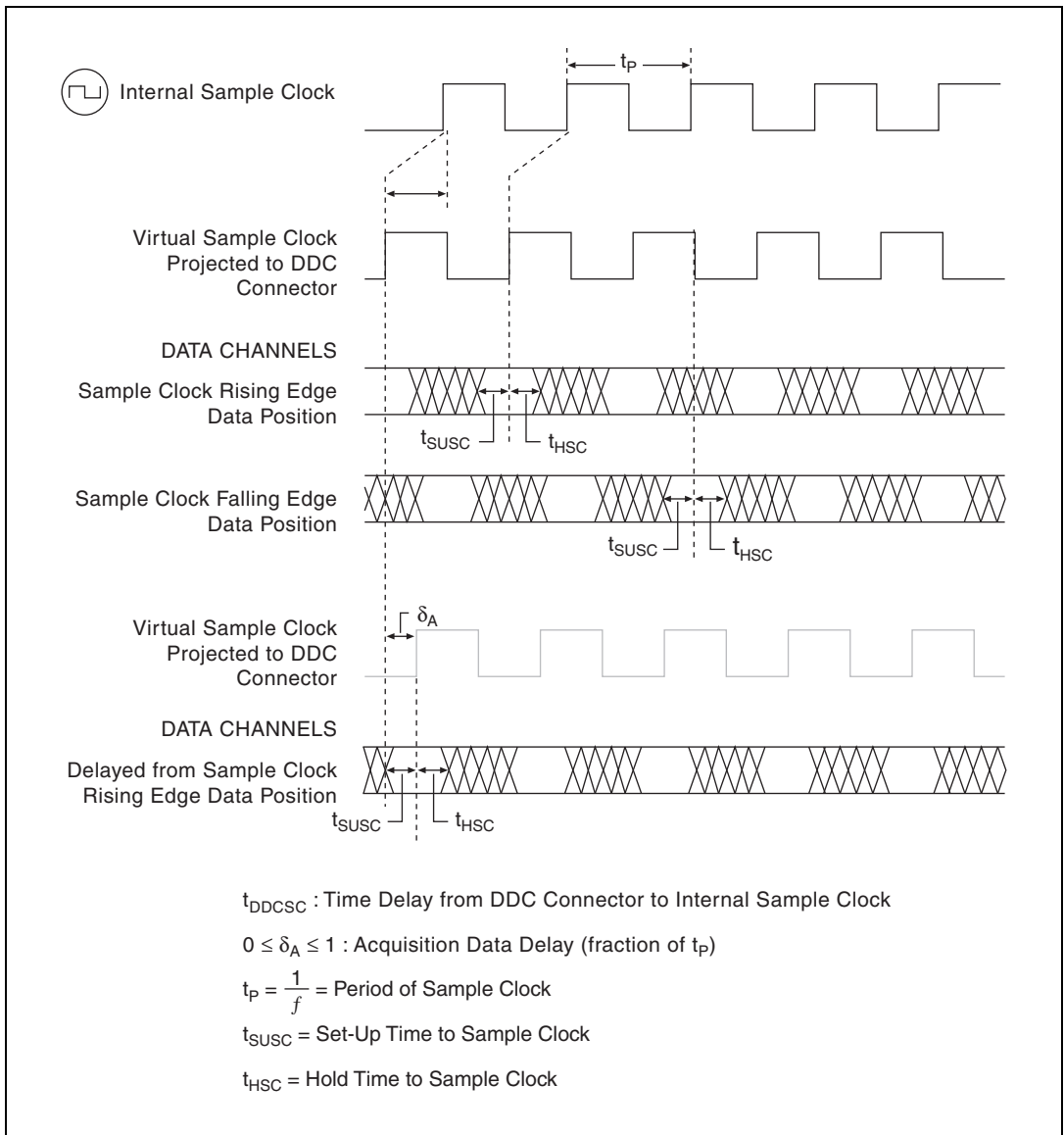
## Acquisition Timing (Data, STROBE, and PFI <0..3> Channels)

Specification	Value	Comments
Channel-to-channel skew	$\pm 600$ ps	Typical skew across all data channels
Data position modes	Sample clock rising edge, Sample clock falling edge, or Delay from Sample clock rising edge	—
Setup time to STROBE ( $t_{SUS}$ )	3.1 ns	Maximum; includes maximum data channel-to-channel skew
Hold time to STROBE ( $t_{HS}$ )	2.7 ns	Maximum; includes maximum data channel-to-channel skew
Time delay from DDC connector data to internal Sample clock ( $t_{DDCSC}$ )	10 ns	Typical
Setup time to Sample clock ( $t_{SUSC}$ )	0.4 ns	Does not include data channel-to-channel skew, $t_{DDCSC}$ , or $t_{SCDDC}$
Hold time to Sample clock ( $t_{HSC}$ )	0 ns	Does not include data channel-to-channel skew, $t_{DDCSC}$ , or $t_{SCDDC}$

Specification	Value	Comments
Acquisition data delay range ( $\delta_A$ )	0.0 to 1.0 Sample clock periods	Supported for clock frequencies $\geq 25$ MHz
Acquisition data delay resolution ( $\delta_A$ )	1/256 of Sample clock period	Supported for clock frequencies $\geq 25$ MHz



**Figure 3.** Acquisition Timing Diagram Using STROBE as the Sample Clock



**Figure 4.** Acquisition Timing Diagram with Sample Clock Sources Other than STROBE

## CLK IN (SMB Jack Connector)

Specification	Value			Comments	
Direction	Input into device			—	
Signal type	Single-ended			—	
Destinations	1. Reference clock (for the phase lock loop (PLL)) 2. Sample clock			—	
Input coupling	AC			—	
Input protection	±10 VDC			—	
Input impedance	50 Ω (default) or 1 kΩ			Software-selectable	
Minimum detectable pulse width	4 ns			—	
Clock requirements	Clock must be continuous and free-running.			—	
<b>As Sample Clock</b>					
External Sample clock range	<b>Square Waves</b>			—	
	Voltage range	0.65 V <sub>pp</sub> to 5.0 V <sub>pp</sub>		—	
	Frequency range	NI 6541: 20 kHz to 50 MHz		—	
		NI 6542: 20 kHz to 100 MHz		—	
	Duty cycle range	$f < 50$ MHz: 25% to 75% $f \geq 50$ MHz: 40% to 60%		—	
	<b>Sine Waves</b>			—	
	Voltage range	0.65 to 5.0 V <sub>pp</sub>	1.0 to 5.0 V <sub>pp</sub>	2.0 to 5.0 V <sub>pp</sub>	—
	Frequency range	NI 6541: 5.5 to 50 MHz	NI 6541: 3.5 to 50 MHz	NI 6541: 1.8 to 50 MHz	—
		NI 6542: 5.5 to 100 MHz	NI 6542: 3.5 to 100 MHz	NI 6542: 1.8 to 100 MHz	—

Specification	Value	Comments
<b>As Reference Clock</b>		
Reference clock frequency range	10 MHz $\pm$ 50 ppm	—
Reference clock voltage range	0.65 to 5.0 V <sub>pp</sub>	—
Reference clock duty cycle	25 to 75%	—

## STROBE (DDC Connector)

Specification	Value	Comments
Direction	Input into device	—
Destinations	Sample clock (acquisition only)	—
STROBE frequency range	<b>NI 6541:</b> 48 Hz to 50 MHz <b>NI 6542:</b> 48 Hz to 100 MHz	—
STROBE duty cycle range	<b>NI 6541:</b> 25 to 75% for clock frequencies <50 MHz <b>NI 6542:</b> 40 to 60% for clock frequencies $\geq$ 50 MHz 25 to 75% for clock frequencies <50 MHz	At the programmed thresholds
Minimum detectable pulse width	4 ns	Required at both acquisition voltage thresholds
Voltage thresholds	Refer to the <i>Acquisition Timing (Data, STROBE, and PFI &lt;0..3&gt; Channels)</i> specifications in the <i>Channel Specifications</i> section.	—
Clock requirements	Clock must be continuous and free-running	—
Input impedance	<b>Module Assemblies Labeled A and B</b>	Software-selectable
	10 k $\Omega$	
	<b>Module Assemblies Labeled C and Later</b>	
	50 k $\Omega$	



## PXI\_STAR (PXI Backplane)

Specification	Value	Comments
Direction	Input into device	—
Signal type	Single-ended	—
Destinations	<ol style="list-style-type: none"> <li>1. Sample clock</li> <li>2. Start trigger</li> <li>3. Reference trigger (acquisition sessions only)</li> <li>4. Advance trigger (acquisition sessions only)</li> <li>5. Pause trigger (generation sessions only)</li> <li>6. Script trigger &lt;0..3&gt; (generation sessions only)</li> </ol>	—
PXI_STAR frequency range	<b>NI 6541:</b> 48 Hz to 50 MHz <b>NI 6542:</b> 48 Hz to 100 MHz	—
Clock requirements	Clock must be continuous and free-running.	—

## CLK OUT (SMB Jack Connector)

Specification	Value	Comments
Direction	Output from device	—
Sources	<ol style="list-style-type: none"> <li>1. Sample clock (excluding STROBE)</li> <li>2. Reference clock (PLL)</li> </ol>	—
Output impedance	50 $\Omega$ nominal	—
Electrical characteristics	Refer to the <i>Generation Timing (Data, DDC CLK OUT, and PFI &lt;0..3&gt; Channels)</i> specifications in the <i>Channel Specifications</i> section.	—
Maximum drive current	8 mA at 1.8V, 16 mA at 2.5V, 32 mA at 3.3V	—
Logic type	Generation logic family setting (3.3V, 2.5V, 1.8V)	—

## DDC CLK OUT (DDC Connector)

Specification	Value	Comments
Direction	Output from device	—
Sources	Sample clock	STROBE cannot be routed to DDC CLK OUT.
Electrical characteristics	Refer to the <i>Generation Timing (Data, DDC CLK OUT, and PFI &lt;0..3&gt; Channels)</i> specifications in the <i>Channel Specifications</i> section.	—

## Reference Clock (PLL)

Specification	Value	Comments
Reference clock sources	<ol style="list-style-type: none"> <li>1. PXI_CLK10 (PXI backplane—PXI only)</li> <li>2. RTSI 7 (PCI only)</li> <li>3. CLK IN (SMB jack connector)</li> <li>4. None (On Board Clock not locked to a reference)</li> </ol>	Provides the reference frequency for the PLL
Lock time	400 ms	Typical
Reference clock frequencies	10 MHz $\pm$ 50 ppm	—
Reference clock duty cycle range	25 to 75%	—
Reference clock destinations	CLK OUT (SMB jack connector)	—

# Waveform Specifications

## Memory and Scripting

Specification	Value			Comments
Memory architecture	The NI 6541/6542 uses the Synchronization and Memory Core (SMC) technology in which waveforms and instructions share onboard memory. Parameters such as number of script instructions, maximum number of waveforms in memory, and number of samples (S) available for waveform storage are flexible and user-defined.			Refer to the <i>Onboard Memory</i> section in the <i>NI Digital Waveform Generator/ Analyzer Help</i> for more information.
Onboard memory size	1 Mbit/channel (for generation sessions)	8 Mbit/channel (for generation sessions)	64 Mbit/channel (for generation sessions)	Maximum limit for generation sessions assumes no scripting instructions.
	1 Mbit/channel (for acquisition sessions)	8 Mbit/channel (for acquisition sessions)	64 Mbit/channel (for acquisition sessions)	
Generation modes	<b>Single-waveform mode:</b> Generate a single waveform once, $n$ times, or continuously.			—
	<b>Scripted mode:</b> Generate a simple or complex sequence of waveforms. Use scripts to describe the waveforms to be generated, the order in which the waveforms are generated, how many times the waveforms are generated, and how the device responds to Script triggers.			

Specification	Value		Comments	
Generation minimum waveform size in samples (S)	<b>Configuration</b>	<b>Sample Rate</b>		Sample rate dependent. Increasing sample rate increases minimum waveform size requirement. For information on these configurations, refer to <i>Common Scripting Use Cases</i> topic in the <i>NI Digital Waveform Generator/ Analyzer Help</i> .
		<b>100 MHz (NI 6542 only)</b>	<b>50 MHz</b>	
	Single waveform	2 S	2 S	
	Continuous waveform	32 S	16 S	
	Stepped sequence	128 S	64 S	
Burst sequence	512 S	256 S		
Generation finite repeat count	1 to 16,777,216		—	
Generation waveform quantum	Waveform size must be an integer multiple of 2 S.		Regardless of waveform size, NI-HSDIO allocates waveforms into block sizes of 32 S of physical memory.	
Acquisition minimum record size	1 S		Regardless of waveform size, NI-HSDIO allocates at least 128 bytes for a record.	
Acquisition record quantum	1 S		—	

Specification	Value	Comments
Acquisition maximum number of records	2,147,483,647	—
Acquisition number of pre-Reference trigger samples	0 up to full record	—
Acquisition number of post-Reference trigger samples	0 up to full record	—

## Triggers (Inputs to the NI 6541/6542)

Specification	Value	Comments
Trigger types	<ol style="list-style-type: none"> <li>1. Start trigger</li> <li>2. Pause trigger</li> <li>3. Script trigger &lt;0..3&gt; (generation sessions only)</li> <li>4. Reference trigger (acquisition sessions only)</li> <li>5. Advance trigger (acquisition sessions only)</li> </ol>	—
Sources	<ol style="list-style-type: none"> <li>1. PFI 0 (SMB jack connector)</li> <li>2. PFI &lt;1..3&gt; (DDC connector)</li> <li>3. PXI_TRIG&lt;0..7&gt; (PXI backplane—PXI only)/RTSI &lt;0..7&gt; (RTSI bus—PCI only)</li> <li>4. PXI_STAR (PXI backplane—PXI only)</li> <li>5. Pattern match (acquisition sessions only)</li> <li>6. Software (user function call)</li> <li>7. Disabled (do not wait for a trigger)</li> </ol>	—

Specification	Value			Comments
Trigger detection	<ol style="list-style-type: none"> <li>1. Start trigger (edge detection: rising or falling)</li> <li>2. Pause trigger (level detection: high or low)</li> <li>3. Script trigger &lt;0..3&gt; (edge detection: rising or falling; level detection: high or low)</li> <li>4. Reference trigger (edge detection: rising or falling)</li> <li>5. Advance trigger (edge detection: rising or falling)</li> </ol>			—
Minimum required trigger pulse width	<b>Generation Triggers</b>		<b>Acquisition Triggers</b>	—
	30 ns		Acquisition triggers must meet setup and hold time requirements.	
Trigger rearm time	<b>Start to Reference Trigger</b>	<b>Start to Advance Trigger</b>	<b>Reference to Reference Trigger</b>	—
	57 S, typical; 64 S, maximum	138 S, typical; 143 S, maximum	132 S, typical; 153 S, maximum	
Destinations	<ol style="list-style-type: none"> <li>1. PFI 0 (SMB jack connectors)</li> <li>2. PFI &lt;1..3&gt; (DDC connector)</li> <li>3. PXI_TRIG&lt;0..6&gt; (PXI backplane—PXI only)/RTSI&lt;0..6&gt; (RTSI bus—PCI only)</li> </ol>			Each trigger can be routed to any destination except the Pause trigger. The Pause trigger cannot be exported for acquisition sessions.
Delay from Pause trigger to Pause state	<b>Generation Sessions</b>		<b>Acquisition Sessions</b>	Use the Data Active event during generation to determine when the NI 6541/6542 enters the Pause state.
	32 Sample clock periods + 150 ns		Synchronous with the data	
Delay from trigger to digital data output	32 Sample clock periods + 160 ns			—

## Events (Generated from the NI 6541/6542)

Specification	Value	Comments
Event type	<ol style="list-style-type: none"> <li>1. Marker &lt;0..3&gt; (generation sessions only)</li> <li>2. Data Active event (generation sessions only)</li> <li>3. Ready for Start event</li> <li>4. Ready for Advance event (acquisition sessions only)</li> <li>5. End of Record event (acquisition sessions only)</li> </ol>	—
Destinations	<ol style="list-style-type: none"> <li>1. PFI 0 (SMB jack connectors)</li> <li>2. PFI &lt;1..3&gt; (DDC connector)</li> <li>3. PXI_TRIG&lt;0..6&gt; (PXI backplane—PXI only)/RTSI&lt;0..6&gt; (RTSI bus—PCI only)</li> </ol>	Each event can be routed to any destination, except the Data Active event. The Data Active event can be routed only to the PFI channels.
Marker time resolution (placement)	Markers must be placed at an integer multiple of 2 S.	—

## Miscellaneous

Specification	Value	Comments
Warm-up time	15 minutes	—
<b>On Board Clock characteristics (valid when PLL reference source is set to None)</b>		
Frequency accuracy	±100 ppm	—
Temperature stability	±30 ppm	—
Aging	±5 ppm first year	—

## Power

Specification	Value		Comments
	Typical	Maximum	
+3.3 VDC	1.6 A	1.8 A	—
+5 VDC	1.2 A	1.7 A	—
+12 VDC	0.25 A	0.40 A	—
–12 VDC	0.06 A	0.10 A	—
Total power	15 W	20.5 W	—

## Physical Specifications

Specification	Value		Comments
	PXI	PCI	
Dimensions			—
	3U, One Slot, PXI/cPCI Module 21.6 × 2.0 × 13.1 cm (8.5 × 0.8 × 5.16 in.)	12.6 × 35.5 cm (4.95 × 13.9 in.)	
Weight			—
	343 g (12.1 oz)	PCI: 410 g (14.5 oz)	
<b>Front Panel Connectors</b>			
Label	Function(s)	Connector Type	
CLK IN	External Sample clock, external PLL reference input	SMB jack connector	—
PFI 0	Events, triggers	SMB jack connector	—
CLK OUT	Exported Sample clock, exported Reference clock	SMB jack connector	—
DIGITAL DATA & CONTROL	Digital data channels, exported Sample clock, STROBE, events, triggers	68-pin VHDCI connector	—



## Software

Specification	Value	Comments
Driver software	NI-HSDIO driver software 1.2 or later. NI-HSDIO allows you to configure and control the NI 6541/6542. NI-HSDIO provides application interfaces for many development environments. NI-HSDIO follows IVI application programming interface (API) guidelines.	—
Application software	NI-HSDIO provides programming interfaces for the following application development environments (ADEs): <ul style="list-style-type: none"> <li>• National Instruments LabVIEW</li> <li>• National Instruments LabWindows™/CVI™</li> <li>• Microsoft Visual C/C++</li> </ul>	Refer to the <i>NI-HSDIO Instrument Driver Readme</i> for more information about supported ADE versions.
Test panel	National Instruments Measurement & Automation Explorer (MAX) provides test panels with basic acquisition and generation functionality for the NI 6541/6542. MAX is included on the NI-HSDIO driver CD.	—

## Environment



**Note** To ensure that the NI 6541/6542 cools effectively, follow the guidelines in the *Maintain Forced Air Cooling Note to Users* included with the NI 6541/6542. The NI 6541/6542 is intended for indoor use only.



Specification	Value	Comments
Operating temperature	<b>PXI:</b> 0 to +55 °C in all NI PXI chassis except the following: 0 to +45 °C when installed in an NI PXI-1000/B and NI PXI-101X chassis (Meets IEC 60068-2-1 and IEC 60068-2-2.) <b>PCI:</b> 0 to +45 °C	—
Storage temperature	–20 to 70 °C	—

Specification	Value	Comments
Operating relative humidity	10 to 90% relative humidity, noncondensing (Meets IEC 60068-2-56.)	—
Storage relative humidity	5 to 95% relative humidity, noncondensing (Meets IEC 60068-2-56.)	—
Operating shock	30 g, half-sine, 11 ms pulse (Meets IEC 60068-2-27. Test profile developed in accordance with MIL-PRF-28800F.)	—
Storage shock	50 g, half-size, 11 ms pulse (Meets IEC 60068-2-27. Test profile developed in accordance with MIL-PRF-28800F.)	—
Operating vibration	5 to 500 Hz, 0.31 g <sub>rms</sub> (Meets IEC 60068-2-64.)	—
Storage vibration	5 to 500 Hz, 2.46 g <sub>rms</sub> (Meets IEC 60068-2-64. Test profile exceeds requirements of MIL-PRF-28800F, Class B.)	—
Altitude	0 to 2,000 m above sea level (at 25 °C ambient temperature.)	—
Pollution Degree	2	—

## Safety, Electromagnetic Compatibility, and CE Compliance

Specification	Value	Comments
Safety	<p>The NI 6541/6542 meets the requirements of the following standards of safety for electrical equipment for measurement, control, and laboratory use:</p> <ul style="list-style-type: none"> <li>• IEC 61010-1, EN 61010-1</li> <li>• UL 61010-1, CSA 61010-1</li> </ul>	For UL and other safety certifications, refer to the product label or to the <i>Online Product Certification</i> section.

Specification	Value	Comments
Electro-magnetic Compatibility Directive (EMC)	<p>This product meets the requirements of the following EMC standards for electrical equipment for measurement, control, and laboratory use:</p> <ul style="list-style-type: none"> <li>• EN 61326-1 (IEC 61326-1): Class A emissions; Basic immunity</li> <li>• EN 55011 (CISPR 11): Group 1, Class A emissions</li> <li>• AS/NZS CISPR 11: Group 1, Class A emissions</li> <li>• FCC 47 CFR Part 15B: Class A emissions</li> <li>• ICES-001: Class A emissions</li> </ul> <p>For the standards applied to assess the EMC of this product, refer to the <i>Online Product Certification</i> section below.</p>	<p>To meet EMC compliance:</p> <p>SHC68-C68-D4 or SHC68-C68-D2 shielded cable must be used when operating the NI 6541/6542.</p> <p>EMI filler panels (NI P/N 778700-01) must be installed in all empty slots of the NI 6541/6542.</p>
CE Compliance	<p>This product meets the essential requirements of applicable European Directives as follows:</p> <ul style="list-style-type: none"> <li>• 2006/95/EC; Low-Voltage Directive (safety)</li> <li>• 2004/108/EC; Electromagnetic Compatibility Directive (EMC)</li> </ul>	—
Online Product Certification	<p>Refer to the product Declaration of Conformity (DoC) for additional regulatory compliance information. To obtain product certifications and the DoC for this product, visit <a href="http://ni.com/certification">ni.com/certification</a>, search by model number or product line, and click the appropriate link in the Certification column.</p>	—
Environmental Management	<p>NI is committed to designing and manufacturing products in an environmentally responsible manner. NI recognizes that eliminating certain hazardous substances from our products is beneficial to the environment and to NI customers.</p> <p>For additional environmental information, refer to the <i>NI and the Environment</i> Web page at <a href="http://ni.com/environment">ni.com/environment</a>. This page contains the environmental regulations and directives with which NI complies, as well as other environmental information not included in this document.</p>	—

Specification	Value	Comments
 <p>Waste Electrical and Electronic Equipment (WEEE)</p>	<p><b>EU Customers:</b> At the end of the product life cycle, all products <i>must</i> be sent to a WEEE recycling center. For more information about WEEE recycling centers, National Instruments WEEE initiatives and compliance with WEEE Directive 2002/96/EC on Waste Electrical and Electronic Equipment, visit <a href="http://ni.com/environment/weee">ni.com/environment/weee</a>.</p>	<p>—</p>
<p style="text-align: center;"><b>电子信息产品污染控制管理办法（中国 RoHS）</b></p> <p> <b>中国客户</b> National Instruments 符合中国电子信息产品中限制使用某些有害物质指令 (RoHS)。关于 National Instruments 中国 RoHS 合规性信息，请登录 <a href="http://ni.com/environment/rohs_china">ni.com/environment/rohs_china</a>。(For information about China RoHS compliance, go to <a href="http://ni.com/environment/rohs_china">ni.com/environment/rohs_china</a>.)</p>		

CVI, LabVIEW, National Instruments, NI, ni.com, the National Instruments corporate logo, and the Eagle logo are trademarks of National Instruments Corporation. Refer to the *Trademark Information* at [ni.com/trademarks](http://ni.com/trademarks) for other National Instruments trademarks. The mark LabWindows is used under a license from Microsoft Corporation. Windows is a registered trademark of Microsoft Corporation in the United States and other countries. Other product and company names mentioned herein are trademarks or trade names of their respective companies. For patents covering National Instruments products/technology, refer to the appropriate location: **Help»Patents** in your software, the `patents.txt` file on your media, or the *National Instruments Patent Notice* at [ni.com/patents](http://ni.com/patents).